

# **Supporting Community Partnerships Initiative**

## **A Community Plan to Address Homelessness in Dufferin County**

Prepared by:

Janice Peters, Housing Services Supervisor  
Michelle Brown, Housing Counsellor

## **Introduction**

Situated 80-km northwest of Toronto, Dufferin County has experienced some of the rapid growth associated with communities near large urban areas, and is predicted to grow from its approximate 38,000 residents at this point to over 60,000 residents by the year 2006. Still, significant portions of the County remain rural: its three main communities: Shelburne, Grand Valley, and Orangeville are separated by considerable distance. (Appendix 1.0)

Although not as prevalent as in the large urban centers, homelessness is becoming a very significant and growing problem in Dufferin County. In January 1999 an Advisory Committee was formed recognizing an increased problem in locating and maintaining affordable accommodations for persons with special needs, families and single persons. It was recognized that early interventions should be put into place to assist persons facing severe accommodation problems and to develop recommendations for appropriate longer-term initiatives to minimize homelessness in Dufferin. As a result Dufferin County was able to implement the Housing help project which provided for the hiring of a Housing Counsellor to assist persons facing a housing crisis. The Housing Program has been in high demand with over 600 client contacts in the first year.

With the list for subsidized accommodation extending to approximately 4 years for a family to wait, and the limited number of private rental units there has been an ever increasing need for a number of these families to rely on temporary living arrangements with family, friends, or settling for substandard accommodations. Although many long-term options are being pursued for permanent housing, there is a greater need to assist those persons who are unable to secure housing. This can be attributed to the lack of affordable housing stock as well as a current vacancy rate of 0.1%. (Appendix 1.1).

Dufferin County presently has an emergency shelter for women (16 years or older) and their children who have been abused physically, sexually, emotionally, verbally or financially. These women and their children can stay at the shelter for up to six weeks. The shelter will also provide emergency shelter to women who are experiencing a housing crisis whenever space is available for up to two weeks. Unfortunately, the shelter can not accommodate the needs of the entire community, and must refuse space. Recently the shelter reported 131 requests for space were denied for various reasons over a six- month period. (Appendix 1.2)

Currently Dufferin County does not have a shelter for men, or families with male children over 16 years of age. The Salvation Army in cooperation with Social Services provides emergency accommodation in local hotels throughout the County, for a maximum of two nights. This is not a solution, but rather an interim support offered until the Housing Counsellor is able to meet with the clients to provide referrals to other resources. It is not always possible to solve the housing crisis within the amount of time provided, therefore clients have to seek space outside of the County. This only increases the clients stress to have to relocate to an unfamiliar community, and place the burden on another community to provide shelter.

The proposed Second Stage Transitional Housing Program will provide supportive temporary housing for up to three months. The residents will have all of their basic needs met for the first few days through the Salvation Army, until the Housing Counsellor can assess financial assistance. The goal is to provide safe supportive housing until residents can establish more permanent accommodation. The Salvation Army will be in charge of the day to day activities/operation of the House with assistance from Dufferin Housing Services. As soon as an income can be established, residents will be expected to pay rent. The rent will be based on 30% of the client's gross income. This rent calculation is based on current practice of the local Housing Services, as well as the Second Stage Program of Family Transition Place. This will ensure that the client is able to contribute an affordable amount of rent with enough money to purchase basic needs items such as food and clothing.

The “Out of the Cold” Youth shelter opened on January 17, 2000. The program is located in Orangeville and draws youth mainly from Dufferin County. Currently the shelter is only open over night between the hours of 6pm and 8am, to youth between the ages of 16 and 24. The program is located in Orangeville where transient and unemployed youth are seeking shelter from the outlying parts of the County that are mainly rural. The program does not feel that it is able to meet the growing needs of the youth in Dufferin County. The main goal of the program is to alleviate the housing crisis and poverty for homeless youth. With assistance from SCPI the shelter plans to create a safe and supportive housing environment for youth open 24 hours, 7 days a week, with full time paid staff. The staff will provide the coordination; community outreach, and house management that is necessary to provide 24 hour service.

To date 63 young people have sought refuge at the shelter. In the first year 47 young person were admitted into the program for a total of 1,073 client nights. The shelter is run completely by volunteers and community support from the private, public and business sector. To date, the minimum number of volunteers to cover shifts in the shelter totaled 65. Hiwhois Assistance group is the main sponsoring body for the shelter, as well as the kinsmen Club of Orangeville, and the Dufferin Youth Action Council. The shelter operates under the guide of a Steering Committee, and Advisory Board. (Appendix 1.3,1.4) The Steering Committee holds primary responsibility for the governance of the shelter, while the Advisory group focuses on special areas of expertise. These areas include family medicine, dental health, criminal law, communications, mental health, and community liaison.

The federal investment for this initiative will cover program overhead costs of: rent, hydro, gas, telephone, insurance, as well as some of the direct program expenses of food, house supplies, maintenance, office supplies, and transportation. The monies will also be used towards the salary of the full time coordinator, and youth outreach worker, as well as administrative fees for the support organization. This will provide the County with a strengthened and sustainable 24-hour emergency and transitional housing resource for Youth.

## **1. Geographic Area**

The geographic area covered in this plan is Dufferin County. The County comprises Melancthon, Mulmer, Mono, East Luther Grand Valley, Amaranth and East Garafraxa Townships including the Towns of Grand Valley, Orangeville and Shelburne.

## **2. Objectives**

- To provide Second Stage/Transitional Housing to families, youth, and individuals.
- To provide Supportive Services to Homeless families/individuals/youth in Dufferin County during the transition to permanent housing.
- To coordinate the continuum of supports which will assist individuals with employment training, permanent housing, personal and professional skills development, and personal growth.
- To create greater community awareness associated with homelessness.

## **3. Community Plan Development Process**

The first community consultation was held on Monday, December 4, 2000, and hosted by Dufferin Housing Services. The total number of participants invited was 42. The total number in attendance was 17. (Appendix A) Several community organizations were not able to attend the community meetings, but have expressed an interest in the plan and continue to be informed through updates sent by mail, fax, or e-mail. This method of communication and outreach will continue throughout the implementation of the plan. All possible efforts will be made to continue to be an open and inclusive Community group throughout the launch of the Supporting Community Partnerships Initiative.

The Community Group representing the community at large is included as an attachment. (Appendix A).

An overview of the Supporting Community Partnerships Initiative was presented at the first meeting, including an invitation to the other community partners to bring forward recommendations to address homelessness. Dufferin Housing Services recommended the creation of a Second Stage House to provide transitional housing with support services for families and singles. Kristina Sisson, representing the Out of the Cold program, identified the need for financial support of the program to become a permanent youth shelter.

A member from the faith community recommended the possibility of an “out of the cold” program being offered through the local churches for persons living in the outlying rural communities where the current “emergency housing service” is limited to the more urban communities. (See assets and gaps.)

After much discussion, the Community Group decided to create smaller sub-committee working groups to address the specific needs of Dufferin County, as well as discuss the viability of each recommendation. These smaller working groups would then report back to the larger community group with updates and request support for each initiative.

These working groups were set up on the following issues to provide input into the plan:

- 1 Homeless youth
- 2 Gaps in housing services, which address homeless families and individuals
- 3 Faith community

The list of participating organizations for each working group is included as an attachment. (Appendix B, B2 and B3).

The smaller group meetings have had approximately six meetings and will continue to meet quarterly as the plan unfolds. The smaller group meetings during the three months of planning reported back to the larger community group with updates as necessary. The smaller working groups will also report to the Community Advisory Board. Please note that due to the size of our community, the members of the working groups are the same members of the Community Advisory Board. **This scenario is often the case in smaller communities.** The Community Entity is hopeful that as the plan unfolds there will be greater community involvement, therefore expanding the diversity of the C.A.B. members.

It should also be noted that all efforts were made to include other groups such as the Aboriginal and youth population. The County of Dufferin does not currently have a designated band or native reserve in the area. All local agencies were contacted but there are currently no community resources specific to the needs of the Aboriginal community. The Ontario Works department does not have any self-declared Aboriginal clients. Should any Aboriginal member of the community come forward, they will have access to both initiatives. The County of Dufferin as the Community Entity will continue to outreach through other community service agencies to ensure that any and all new Aboriginal residents are aware of the services offered in both initiatives. In the case of youth, they are represented on the working groups (appendix B) and will be kept informed of the implementation of the plan through those agencies and by way of general SCPI communications efforts in the community.

Meetings did take place to discuss the viability of a stand-alone initiative for the Youth Employment Strategy component of SCPI. Community Youth Services (CYS) has now signed a contract with HRDC under Youth Services Canada to assist youth at risk and homeless youth, by providing valuable work experience. This project has been very well received at one of the large community meetings. This program will be a valuable resource to the community, and will strengthen the current continuum of supports for youth. The Community Group fully supports this initiative.

The current list of services available through Community Youth Services is included as an attachment. (Appendix C).

Dufferin County will be the Community Entity, and the members of the smaller working groups constitute the Community Advisory Board who will continue to be directly involved in the implementation of the Community Plan. The Advisory Board will meet quarterly and receive updates from the Community entity as well as report to the Community Entity on how they perceive the initiatives are meeting the evolving community needs.

The list of participants and members of the Community Advisory Board are included as an attachment. (Appendix D).

The results of the following reports served as reference to the Second Stage/Transitional Housing/Out of the Cold Proposal:

- The Salvation Army Emergency Housing Proposal - January 1999 in cooperation with the Oxford County Housing Authority - relating to the County of Oxford Homelessness Initiative Fund
- Report on Homelessness in the Peel Halton Dufferin Area - August 1999 - Madona Mokbel, Labour Market Analyst, Human Resources Development Canada
- Family Transition Second Stage Housing - House Rules and Guidelines for Cooperative Living
- Statistics Canada 1996 - Census Data, Selected Demographics
- Service Data Summary 1996-2000
- Dufferin Housing Services - Waiting List for Affordable Housing in Dufferin County
- Program Statistics Report for Dufferin County Housing Program
- Salvation Army (Orangeville Corps) statistical report 2000
- First Contact Harsh Reality: The Homeless Experience 2000 Report/Video

The following community representatives will continue in an advisory capacity during the implementation period of the proposed initiatives:

- The County of Dufferin will act as the Community Entity
- The Community Entity will act as the transfer Payment Agency, responsible for the contract of the Federal SCPI Funds for specific initiatives
- County of Dufferin Social Services - Carl Ross, Administrator
- Dufferin Housing Services - Janice Peters, Supervisor  
-Michelle Brown, Housing Counsellor
- Salvation Army - Darryl Patey, Director of Community and Family Services Division
- Dufferin Association for Community Living - Teddi Evans, Community Support r
- Out of the Cold Youth Shelter - Kristina Sisson, Chair
- Faith Community - Wayne Donnelly, Community Member
- Family Transition Place - Rhonda Messerer, Transitional Support/Second Stage Housing Counsellor

#### **4. Assets and Gaps**

Summary table of existing supports and services for a Continuum of Supports Approach.

## Gaps and Assets in Service

LOCAL SERVICE				YOUTH	INDIVIDUAL	FAMILY	ACCESSIBLE
<b>FOOD BANKS</b>							
<b>Orangeville Food Bank</b>							
Provides 3 day supply of food to families once a month						x	
Open every Tuesday from 10am - 3pm							
<b>Shepherd's Cupboard, Shelburne</b>							
Provides assistance to persons in need of help				x	x	x	x
Open every Thursday from 7pm - 8:30pm							
<b>COMMUNITY SERVICES</b>							
<b>Salvation Army Family Services</b>							
Provides emergency provisions: food, clothing, shelter, transportation				x	x	x	x
Open Monday and Wednesday from, 9am - 11am, and Friday. 1pm - 3pm							
<b>Community Care Access Centre (CCAC)</b>							
long term care services for seniors and people with disabilities							
Provides information on services, programs, supportive housing					x		x
Open Monday. - Friday.							
<b>Dufferin Association for Community Living</b>							
Services for adults and children with developmental disabilities							
Adult day and residential services, Supported Independent Living							
Pre-school Resource Program, Rolling Hills Children Place,				x	x	x	x
Community Outreach							
Hours vary depending on program							
<b>Family Transition Place</b>							
Offers services for abused women and children: residential services,				x	x	x	x
counselling, legal support, referrals, and supportive housing							
Residential services are available 7 days a week, 24 hours every day							
<b>Dufferin Housing Services</b>							
Subsidized housing in Dufferin County				x	x	x	x
<b>Out of The Cold</b>							
provides information, and temporary shelter to youth aged 16 - 24				x	x	x	
with referrals to: youth employment and local services							
Open 7 days a week, from 6pm - 8am							

As the County continues to grow, so does the need for community services, and particularly **accommodations**. Over the past ten years Dufferin Housing Services wait list for subsidized accommodation has doubled. Currently the wait list is approximately four years for a family, and 2 – 3 years for single individuals. This has increased the demand on the Salvation Army, Family Transition place, and Out of the Cold program for residential space that is currently not satisfying demand. A lack of services for homeless people in the County is not the primary issue in Dufferin, but rather the predominate gap for SCPI funding to address is a youth shelter with 24/7 access and transitional housing - both accommodations initiatives.

The Salvation Army with the support of the Social Services Housing Program currently uses a voucher system to provide overnight shelter to families and singles in one of the local hotels. This system only works well for the transient population. This system is not appropriate for families and /or individuals in need of long-term options. The hotel stays can only be used for a maximum of two nights due to the high cost with an average of \$70.00/night. The local hotels do not have cooking facilities; therefore residents must rely on local fast food. This is not appropriate for children, or persons with special dietary requirements.

Family Transition Place is a 14 bed funded facility for abused women and their children. The shelter is able to provide 24-hour, seven days a week residential services. Whenever space is available, the shelter can provide up to a maximum of two weeks for an emergency housing crisis. Family Transition Place provides an invaluable service to this community, but it is not always able to meet the demand for space. During the last fiscal year April 2000 – March 2001, the shelter reports 152 women, and 168 children were granted space for abuse, plus 34 women, and 27 children for housing. The gap in this service lies with the **223 women** and **148 children**, turned away for both abuse and housing requests. Recently the shelter reported 131 requests for space were denied for various reasons over a six-month period. (Appendix 1.2)

The Out of the Cold program opened its doors on January 17, 2000. During the first year the program was able to offer shelter and meals to 47 youth, for a total of 1,073 client nights. This number would be much higher if the program was able to properly accommodate all the requests for space. The program has been in operation without any formal funding, or paid staff. The community has supported the program since day one, but the demand for service is far greater then the program can currently provide. The program is only open during the hours of 6p.m.-8a.m., seven days a week (whenever possible). **One of the largest gaps in this service is due to the hours of operation.** Other community service agencies are only open during regular business hours between 8a.m. –5p.m., when the program is closed.

Agency workers are not able to secure space for their clients. This is very difficult for an agency worker who has to go home and wonder if their client was left on the street or not. This alternative is not acceptable, and so the worker attempts to come up some other solution that generally does not exist in out community. The hope becomes that a family member or friend will be able to take the youth in for the night.



When this is not possible the other alternative is to try and find space at another shelter outside of the area. The larger urban cities are having enough difficulty with providing service for their own residents; they are not able to accommodate ours.

One of the other major gaps in this service is for the youth who must be home during the day. There have been several occasions where a youth from the program has been injured at work, or fallen ill during school and the recommendation was to go home and rest. Several youth have had to turn down employment because the need was for night shift work, therefore needing to sleep during the day. The shelter is not staffed during the day, so if someone needs to stay home, no home exists for that youth. Where are they to go? They end up at coffee shops, the mall, or the hospital emergency room hoping no one will notice them.

With paid staff and the continued dedication of volunteers, the shelter will be able to raise greater community support through greater accessibility, and awareness. **The program will be able to accommodate the needs of almost all youth with 24 hours, seven day a week operation. Referrals from other agencies will be accepted, therefore strengthening the continuum of supports.** Not to mention the shelter will be able to stay true to its name by not sending youth out into the cold when there is a snowstorm during the day.

Currently the County does not have any shelter service for single males, men with children, or women who have male children aged 16 and up, or two parent families. Where do we house these members of the community during a crisis? Currently if the situation is one of abuse, Family Transition Place will assist the woman to locate another shelter outside of the area. The Salvation Army, or the Housing Counsellor will place the individuals into a hotel until another alternative can be found. Again, this is very difficult because unless an affordable accommodation presents itself, the family or individual must leave the community. This causes much stress and undue hardship on the family or individuals, as they feel like outcasts from their own community. This is not an acceptable way to treat members of the community. Unfortunately at this time it is the only way available. The Second Stage Transitional House will help to alleviate the need to relocate outside of the community. Transitional housing shortages are clearly a priority that must be addressed in the recommended funding initiatives

Again it should be noted that although there are no Aboriginal specific services currently available for Aboriginals in the community, it is not seen as a gap in service. The 1996 census data indicates that there were approximately 150 self-declared Aboriginals residing in Dufferin County. This accounts for less than 1% of the County's total population. The County does not have a designated band or native reserve. Currently Ontario Works does not have any self-declared Aboriginals on their caseload. At this time the County does not feel that this is a gap in service. That said, The County and service providers will continue to outreach to ensure that if any new or existing Aboriginal residents come forward, they will full access to any and all services.

## 5. Priorities

Proposed Initiative A: To address the **lack of transitional housing** in Dufferin County, as noted in the gaps analysis, the first initiative is:

To convert a 4 bedroom semi-detached home presently owned by the County of Dufferin into a Second Stage Transitional Housing Facility.

### First Year Funding Priority

#1 Estimated cost for the first year - \$ 134,784

This would include the design and physical renovations required to address building and fire codes. The physical changes required to accommodate families and single persons, include: six private bedrooms, three private bathrooms, secured entrance, separate entrance to basement for singles, laundry facilities, staff office, secondary emergency exit, kitchen, dining, and living room area. The first year funding will also cover the costs of furnishings such as beds, kitchen supplies, washer, dryer, living room and dining room set, dressers, linens, kitchenette, fridge, and stove.

The basement of the House will be converted into a bachelor style apartment that will have two private bedrooms, with a shared living/dining room area with a shared bathroom. The basement will have a kitchenette to provide cooking facilities.

A similar floor design currently used in the Woodstock area as an emergency shelter for families is provided as an attachment. (Appendix E)

#2 Estimated cost for the second year - \$37,500

The second phase of this initiative will be to coordinate the continuum of support services and to address the day-to-day operating costs of the home, and coordinate the first annual Housing Forum. The Housing forum will be a two-day event to inform the community as well as local agencies of the current Housing Services provided in the County, as well as tenants rights. The Salvation Army Community and Family Services Director will require financial assistance to offset a portion of the staffing commitments to the Second Stage Housing Program. Dufferin County Housing Services will offset the cost through in kind donations of staff time to assist with the coordination of these services.

Total estimated cost:	2001/2002	2002/2003	Total
of initiative A	\$134,784	\$37,500	\$172,284

Proposed Initiative B: To address the lack of **youth emergency shelter 24 hours /day**, as noted in the gap analysis, the second initiative is:

To strengthen the existing “Out of the Cold” program. This will be achieved through securing volunteer resources, funding, while maintaining present program activities. This will be achieved through inclusion of paid staff that will enhance the delivery of service. (24 /7 service)

Funding Priority - Estimated cost - \$75,000

This staff person will be the coordinator who will work on the priorities of fund development, community outreach, and marketing, and shelter management. Program expenses such as food, house supplies, office supplies, transportation for youth, as well as a contribution to the salary of the full time coordinator, and youth worker will be paid for from SCPI contributions.

These priorities will continue to be addressed over both years. During this time, the third priority will be addressed through the program coordinator, with the assistance of the full time paid staff; at the end of year two will have strengthened the community contributions, finances, and volunteer base to become a self-sustaining 24 hour operated youth shelter.

Total estimated cost:	2001/2002	2002/2003	Total
of initiative B	\$37,500	\$37,500	\$75,000

This program has already operated for one year, based completely on “In Kind” community donations. The next section provides documentation of how the program has sustained itself for the past year.

The Second Stage housing initiative has not approached the CMHC for monies to assist with the renovations as it is seen as a conflict of interest. Currently, Dufferin Housing Services provides the RRAPP applications to other community members to apply for funding as a means to improve availability of the current rent supplement program. The rent supplement program is operated by Dufferin Housing Services, and therefore poses a conflict of interest.

**Total Cost of Proposal: \$247,284**

## 6. Sustainability

### Initiative A – Second Stage Transitional Housing

<b>Secured Funding Source</b>	<b>Evidence of Funding Provided</b>
Policy Agreement with Salvation Army -\$24,000	Policy confirmation (Appendix G)
Salvation Army Fundraising Efforts -\$10,000	Letter of confirmation (Appendix H)
County of Dufferin - \$132, 000	Estimated market value (Appendix I)
Dufferin Housing Services - \$40,000	Housing Counsellor (Appendix J)

Dufferin County has made the commitment to sustain this community initiative beyond the Federal SCPI Funding of 2003. This property is currently owned and operated by Dufferin County, and will continue to operate as the plan describes.

---

### Initiative B – Out of the Cold Youth Shelter

<b>Secured Funding Source</b>	<b>Evidence of Funding Provided</b>
United Way of Wellington/Guelph - \$4500	Letter of confirmation (Appendix K)
Corporate Support - \$11,300	Letters of confirmation from DUCA, and Clorox (Appendix L)

<b>Projected Funding Source</b>	<b>Evidence of Funding Provided</b>
County of Dufferin - \$4000	Pending County Council approval
Trillium Foundation – \$35,000	Pending re-application
Municipal Township Offices -\$6,600	Pending Application
Other Corporate Sponsors- \$60,000	Pending Application
County of Dufferin - \$8,000	Pending Application

**List of Some Organizations/Businesses providing donations and support since  
January 2000 to the “Out of the Cold Youth Shelter”**

<p><u>Funding Bodies</u> Wellington Dufferin United Way \$4500 Industry Canada's VolNet Program (computer and Internet service for a year for \$680)</p> <p><u>Service Clubs</u> International Order of Daughters of the Empire \$500 Kinsmen \$500 Kinettes \$325</p> <p><u>Businesses/Associations</u> BM Auto Repair \$10 Clorox of Canada \$11,000 Frank the Taylor \$205 DUCA Credit Union \$300 Orangeville Hairstylists \$100 Hiwhois Assistance Group \$10, 000 (paid our rent) Beta Sigma Phi \$50 Johnson Controls \$500</p> <p><u>Schools</u> Orangeville District Secondary School \$300 Robert F. Hall \$750 Westside Secondary School \$25</p> <p><u>Community events</u> Buskers Show \$80 Rocky Horror Picture Show \$350 Happy Feet Line Dancers \$1734 Banner Weight Loss Challenge \$100 (Ryan King)</p> <p><u>Churches</u> <u>Received</u> St Timothy's Catholic Church \$150 Jehovah Jireh \$300</p> <p><u>Exploring ways of helping</u> Broadway Tabernacle, Orangeville All Saints, Erin Faith Wesleyan, Orangeville St Mark's Anglican, Orangeville Seventh Day Adventist, Orangeville Christian Reform, Orangeville</p>	<p><u>Many, many thanks to individuals who have donated financially</u> Jean &amp; Anne Castel, Past Steering Com members Carol Seglins (Mayor of Caledon) Donna Spry ( mother of a shelter resident) Joy Gaskin (Birthday present contribution) Helen Hughson (Thursday night meals) Lorna Bryce (food, supplies) Lisa DeZotti (food, supplies) Dr. David Scott</p> <p><u>Businesses who have donated food, supplies</u> A&amp;P As We Grow Baille Printing Service Glamorum Healing Centre Charles Murphy Contracting Comisso's CompuSmart Ecology Retreat Centre Gillette Canada Inc Hockley Highlands Inn and Conference Centre Home Hardware Building Centre J&amp;A Accounting Kidd's Produce Kimberly Clark Inc Kneichtal's/IGA Orangeville Food Bank Phoenix Computers Pizza Pizza Precept Insurance Riverwood Farms Rowntree Appliance Services Sutton Group – Real Estate The Kitchen Table The Salvation Army Wal-Mart Zehr's Food store</p> <p><u>Agencies giving staff time</u> Dufferin Child and Family Services Family Transition Place First Street Family Dentistry Canadian Mental Health Association Orangeville Community Police</p>
--	---

The following table documents the community contributions provided to the Out of the Cold Youth Shelter during the first year of operation. The program has proven sustainability, as well as community support. Letters and articles of support are included as an attachment. (Appendix M)

**Community Contribution to the “Out of the Cold” Youth Shelter for 2000 / 2001**

<b>In-Kind Donation</b>	<b>Conservative Estimate</b>	
Youth Shelter Steering Committee, Advisory Group, Management Team, and Committee members	25 people for 22.5 hours @ \$12/hour	\$10, 800
Shelter shift Volunteers	40 people for 5110 hours @ \$12/hour	\$81,000
Meeting Space	14 meetings @ \$20.00	\$280.00
Furniture and Appliances	Charged as Second Hand	\$3,160
Food, Toiletries, and Household Supplies	\$90.00/week	\$4,680
Rent	\$853.00/month	\$10, 240
Cash donations to pay for	Utilities, telephone, insurance, and food	\$4,420
Cable	\$35.00/month	\$140.00
Printing / Photocopying	1000 sheets @ \$.06	\$60.00
<b>Total Monetary Equivalency</b>	<b>\$110,780</b>	

The program has operated for the first year based solely on the support of volunteers and community donations. The shelter continues to hold fundraising events, such as “A day in the life” of the shelter. This fundraiser is specific to the estimated cost to run the shelter on a \$300.00 per day basis. This figure includes the total cost to operate the house, including paid staff, utilities, rent, food, etc... Other community groups continue to approach the shelter to assist with holding fundraising activities, such as line dancing, and car washes. The shelter plans to approach the different Township offices to request donations toward the Day in the life fundraiser, as well as apply to several other corporations. (Appendix F)

## **7. Evaluation**

Annual Progress Reports on the Community Plan will be prepared in conjunction with the fiscal year end deadline of March 31 of every year. The entity, Dufferin County, will further quantify data in the assets and gaps profile of the community in order to lead to effective future planning and evaluation.

The reporting process will include:

Monthly statistical reports to the Community Entity (Dufferin County) will include the following:

- Expenditures incurred
- Number of clients served by population group:
  - Gender - Men, Women, Male/Female
  - Age – Children, Youth, Adults, Seniors
  - Family Structure – Singles, Two Parents, Single Parent, Teen Parent
- Additional Characteristics – Aboriginal, Veterans, Immigrants/Refugees, Victims of Violence, Persons with HIV/AIDS, Persons with Mental Health Problems, Persons in the Sex Trade, Persons with Intellectual Hardships, Substance Abusers, Other....
- Number of referrals to community service providers
- Data gathering, which will reflect on the causes of homelessness in Dufferin County:
- Barriers to employment, Lack of Life skills, Credit/Budget Counselling, Affordable Housing, Discrimination, etc.
- Defined processes to obtain, assess, and correlate the above information
- Development of a policy and procedure manual that will reflect accountability

An evaluation will be undertaken at the end of the two years of the SCPI to assess the success in achieving the plan's objectives. The following method will be used to produce the evaluation:

- Three, six and twelve-month evaluation of client outcomes
- How many new partnerships were formed
- How many achieved permanent housing
- Have mechanism in place for self evaluation of program
- Have mechanism in place where community representatives are involved in process
- Have survey completed by each vacating resident

## 8. Communications Strategy

The Community Plan will be shared with the Public through the following plans:

1. Attach to the County Of Dufferin Web site
2. Have copies available at different local venues where housing is discussed
3. Make copies available at the County and Municipal offices
4. Press release where the local media will be invited to attend, take pictures/video, and interact with the local MP presenting the SCPI funding to the County of Dufferin
5. Hold an “Open House” and “Ribbon Cutting” ceremony for both initiatives
6. Hold a public forum – evening meeting – advertise through press release, cable info channel
7. Ongoing updates through the anticipated annual Dufferin Housing Services Symposium
8. The “Out of the Cold” news letter
9. Evaluations and Plan implementation to be shared with the public on a continuing basis through such methods as the Wardens newsletter, RFP/Tendering process and information on the Dufferin county website.

## 9. Communities Contribution

### **Initiative A and B Community Contributions - \$267,129**

Sources of Funding	1999/2000	2001/2002	2002/2003
Provincial Homeless Initiative	\$12,000	\$12,000	\$12,000
Market Unit Vacancy Loss	\$3,989	\$12,000	\$8,000
Market Value		\$137,000	
Staffing		\$12,000	\$12,000
Fundraising		\$5,000	\$5,000
<hr/>			
HIWHOIS	\$10,000		
Corporations	\$1,165	\$11,000	
Local Churches	\$450		
Service Clubs	\$1,325		
United way	\$3,000	\$1,500	
Dufferin County		\$4,000	
Community Fundraising	\$2,700	\$1,000	
<b>Total</b>	<b>\$34,629</b>	<b>\$195,500</b>	<b>\$37,000</b>



The County of Dufferin has made the commitment to sustain the Second Stage Housing Program beyond the year 2003.

The sources of funding beyond the year 2003 have not been secured for this program. However the program has been in operation without formal funding since 2000. The program plans to continue to strengthen the community contributions with the assistance of the full time staff to develop a plan of action to secure funding sources not already in use. The first year development grant of \$35,000 is already underway, and then the program will apply for a three-year grant of \$35,000 per year. The Program will have a secured plan by the end of the first year of SCPI funding that will clearly indicate the secured funding source with letters of confirmation from the community.

## **APPENDIX**

- 1.0 POPULATION GROWTH
- 1.1 STATISTICS CANADA SELECTED DEMOGRAPHICS
- 1.2 FAMILY TRANSITION PLACE SERVICE DATA
- 1.3 YOUTH STEERING COMMITTEE
- 1.4 YOUTH ADVISORY BOARD
  
- A COMMUNITY GROUP INVITATION LIST FOR THE COMMUNITY PLAN
- B COMMUNITY WORKING GROUP MEMBERS
  - B - Homeless Youth
  - B2- Housing Services
  - B3- Faith Community
  
- C COMMUNITY YOUTH SERVICES
- D COMMUNITY ADVISORY BOARD PARTICIPANTS
- E PROPOSED FLOOR PLAN
- F COORPORATIONS / FOUNDATIONS
- G SALVATION ARMY POLICY AGREEMENT
- H SALVATION ARMY FUNDRAISING COMMITMENT
- I MARKET VALUE OF SECOND STAGE HOUSE
- J HOUSING COUNSELLOR CONTRIBUTION
- K DONATION LETTER FROM UNITED WAY WELLINGTON GUELPH
- L DONATION LETTER FROM DUCA AND CLOROX
- M SUPPORT LETTERS
- N ATTACHED COPIES OF NEWS PAPER ARTICLES TO DEMONSTRATE  
COMMUNITY SUPPORT OF THE OUT OF THE COLD PROGRAM

## APPENDIX 1.0

Orangeville's 2000 population is 23,946

YEAR	POPULATION	GROWTH	RATE %
1981	13,740	--	--
1986	14,445	705	1.01
1991	17,920	3,475	4.41
1996	21,445	3,525	3.66
2001	25,652	4,208	3.65
2006	30,343	4,690	3.42
2011	35,502	5,159	3.19
2016	41,112	5,610	2.98
2021	47,166	6,053	2.79

Source: Hemson Growth Management Study, 1996

Dufferin County's 1998 population is 45,657

YEAR	POPULATION	GROWTH	RATE %
1981	31,145	--	--
1986	32,640	1,495	0.94
1991	39,905	7,265	4.10
1996	45,500	5,595	2.66
2001	53,291	7,791	3.21
2006	61,978	8,686	3.07
2011	71,532	9,555	2.91
2016	81,922	10,389	2.75
2021	93,131	11,210	2.60

Source: Hemson Growth Management study, 1996

# APPENDIX 1.1

## SELECTED DEMOGRAPHICS SOURCE – STATISTICS CANADA 1996 CENSUS DATA

VISIBLE MINORITIES	DUFFERIN COUNTY	
TOTAL	985	2%
SOUTH ASIAN	285	29%
BLACK	265	27%
CHINESE	180	18%

APARTMENT VACANCY RATES	1999	2000
BACHELOR	0.0	**
1 BEDROOM	0.4	0.0
2 BEDROOM	0.0	0.2
3 BEDROOM	0.0	0.0
TOTAL	0.2	0.1

AVERAGE APARTMENT RENTS	1999	2000
BACHELOR	\$569	\$**
1 BEDROOM	\$659	\$676
2 BEDROOM	\$783	\$793
3 BEDROOM	\$840	\$886
TOTAL	\$712	\$737

**SELECTED DEMOGRAPHICS  
STATISTICS CANADA 1996 CENSUS DATA**

<b>INCOME</b>		<b>DUFFERIN COUNTY</b>
<b>AVERAGE FAMILY INCOME</b>		<b>BASED ON 12,640 HOUSEHOLDS</b>
		<b>\$ 56,466</b>
<b>HOUSEHOLD INCOME</b>	0 - 10,000	580
	10,000 - 19,000	1625
	20,000 - 29,999	1525
	30,000 - 39,999	1650
	40,000 - 49,999	1900
	50,000 - 59,999	1740
	60,000 - 69,999	1690
	70,000 - 79,999	1315
	80,000 - 89,999	1125
	90,000 - 99,999	595
	1000,000 +	1525
<b>HOUSEHOLD COMPOSITION</b>	TWO PARENT	89.6 %
	LONE PARENT M	2.6 %
	LONE PARENT F	8.8 %
<b>EDUCATION LEVEL</b>	LESS THAN GRADE 9	7 %
	GRADE 9 - 13	44 %
	TRADES / DIPLOMA	4 %
	COLLEGE	21 %
	UNIVERSITY	9 %
<b>HOUSING TENURE</b>	RENT	22 %
	OWN	78 %
<b>GEOGRAPHIC MOBILITY</b>	POPULATION	44,390
<b>ONE YEAR MOBILITY</b>	NON - MOVERS	85.5 %
	MOVERS	14.5 %
<b>FIVE YEAR MOVERS</b>	NON - MOVERS	56 %
	MOVERS	44 %

## APPENDIX 1.2

### Family Transition Place Service Data

PROGRAM	SERVICE	99/00	98/99	97/98	96/97
Residential Services	Women	117	156	149	71
	Children	127	251	176	102
	Occupancy rate	93%	81.50%	66%	66%
	Crisis Calls	2,650	2,328	2,722	2,531
Second Stage Housing	Women	18	14	16	19
	Children	31	31	32	26
	Occupancy rate	81%	81%	75%	75%

### Housing Numbers April – September 2000

- Family Transition Place housed 15 adults and 9 children as housing clients, for a total of 24 clients.
- Family Transition Place refused 81 adults and 50 children who requested housing stays, for a total of 131 clients.
- Reasons for refusal:
  1. Space 25
  2. Housing 18 (not a good fit)
  3. Drug/Alcohol 0
  4. Psychiatric 4
  5. Red Dot 5 (screening system)
  6. Inappropriate 10 (single men with children)
  7. Other 11
  8. No reason given 8

## **APPENDIX 1.3**

### **Members of the Youth Steering Committee**

Kristina Sisson - Chair

Lynda Hogben – Secretary

Jean Crocker – Bookkeeper

Lisa DeZotti – Volunteer Coordinator

Diana Irvine – Food/Supplies Coordinator

Debbie Miles

Kathy Robertson

Dolf Shoenmakers

Violet Buchanan

Ronny & Seth Inglis

Kim Orford

Sharon Traverso

Pierre Alie – Live in Volunteer

## **APPENDIX 1.4**

### **Members of the Youth Advisory Group**

Dr. Peter Cole, Medical Advisor

Sarah Bachoo, Legal Advisor

Dr. Paul Cohn, Dental Advisor

Karen Moffat, Quarry Gates Liaison

Nancy Early, Communications Advisor

Joanne Moore, Mental Health Advisor



## **APPENDIX A**

### **Community Group invited to consult on the Community Plan**

Westminster United Church	Orangeville Police Chief
Orangeville District Secondary School	Westside secondary school
Centre Dufferin District High School	Robert F. Hall Secondary School
Community First Resource Centre	Probation and Parole
Shelburne Police Chief	Shelburne O.P.P.
Big Brothers & Sisters	Community Linkages Project
Teen Ranch	Caledon/Dufferin Victim Services
Distress Centre Wellington/Dufferin	Community Mental Health Clinic
Dufferin Public Health Unit	Out of the Cold Housing
M.P. Murray Calder	M.P.P. David Tilson
Mayer of Orangeville Drew Brown	St. Marks Anglican Church
Orangeville Baptist Church	Tweedsmuir Presbyterian Church
St. Timothy Church	The Salvation Army
Community Youth Services	Dufferin Human Resource Centre
Headwaters Health Care Centre	Orangeville Library
Dufferin Child and Family Services	Family Transition Place
Dufferin Volunteer Centre	Canadian Mental Health Assoc.
Community Care Access Centre	Grand Valley Library
Shelburne Library	Dufferin Social Services
Dufferin Housing Services	Wayne Donnelly Concerned Citizen
Georgian College	Ministerial Association
HIWHOIS Housing	Jeff Bathurst CGA

Town of Orangeville Director of Recreation  
Orangeville and District Chamber of Commerce

## **APPENDIX B**

### **Homeless Youth Community Working Group Members**

County of Dufferin Social Services - Carl Ross, Administrator

Dufferin Housing Services - Janice Peters, Supervisor

Dufferin Housing Services - Michelle Brown, Housing Counsellor

Salvation Army - Darrell Patey, Director of Community and Family Services Division

Out of the Cold Youth Shelter - Kristina Sisson, Chair

## **APPENDIX B2**

### **Housing Services for the Homeless Working Group Members**

County of Dufferin Social Services – Carl Ross, Administrator

Dufferin Housing Services – Janice Peters, Supervisor

Dufferin Housing Services – Michelle Brown, Housing Counsellor

Salvation Army – Darrell Patey, Director of Community and Family Services

Dufferin Association for Community Living – Teddi Evans, Community Support Worker

Family Transition Place - Rhonda Messerer, Transitional Support/Second Stage Housing Counsellor

## **APPENDIX B3**

### **Faith Community Working Group Members**

County of Dufferin Social Services – Carl Ross, Administrator

Dufferin Housing Services – Michelle Brown, Housing Counsellor

Salvation Army–Darrell Patey, Director of Community and Family Services Division

Faith Community – Wayne Donnelly, Community Member

## **APPENDIX C**

### **Community Youth Services Provides Youth age 16-30 the following services**

**Job Connect** offers job search assistance, career exploration, information on apprenticeships, and wage subsidies to employers. The program is eligible to youth who are between the ages of 16 and 24 929 if the youth has a disability), are working less than 20 hours a week, or are not in school full time.

**Community Youth Services (CYS)** The Youth Outreach Worker provides services to young adults age 16-30 living in Dufferin County and the surrounding area. Young adults have access to:

- Information and Referral Services to community agencies / organizations
- One-to –one supportive guidance and life skills workshops
- Student and Youth Employment Services (SAYES)

**SAYES** is a component of Community Youth Services. The Youth Employment Advisor is available to help young adults access employment assistance programs, create effective resumes, explore career options and fill out job applications. SAYES posts temporary, part time and full time job opportunities for young adults on the HRDC job banks and on the job boards in the SAYES office. The service is FREE to employers.

CYS operates Youth Resource Centres in Grand Valley, Orangeville, and Shelburne. The Youth Resource Centres offer job postings, life skills workshops, career planning and job search resources, FREE access to computers to complete resumes, and information on community services.

**Job Opportunities for Youth (JOY)** is an employment program specifically for youth between 18 and 30 seeking career related employment. Beyond the one to one support and guidance available, the program also offers a wage subsidy to employers. The subsidy is designed to offset the cost associated with the initial training and workplace orientation.

## **APPENDIX D**

### **Community Advisory Board Participants**

County of Dufferin Social Services - Carl Ross, Administrator

Dufferin Housing Services - Janice Peters, Supervisor

Dufferin Housing Services - Michelle Brown, Housing Counsellor

Salvation Army - Darrell Patey, Director of Community and Family Services Division

Dufferin Association for Community Living - Teddi Evans, Community Support Worker

Out of the Cold Youth Shelter - Kristina Sisson, Chair

Faith Community - Wayne Donnelly, Community Member

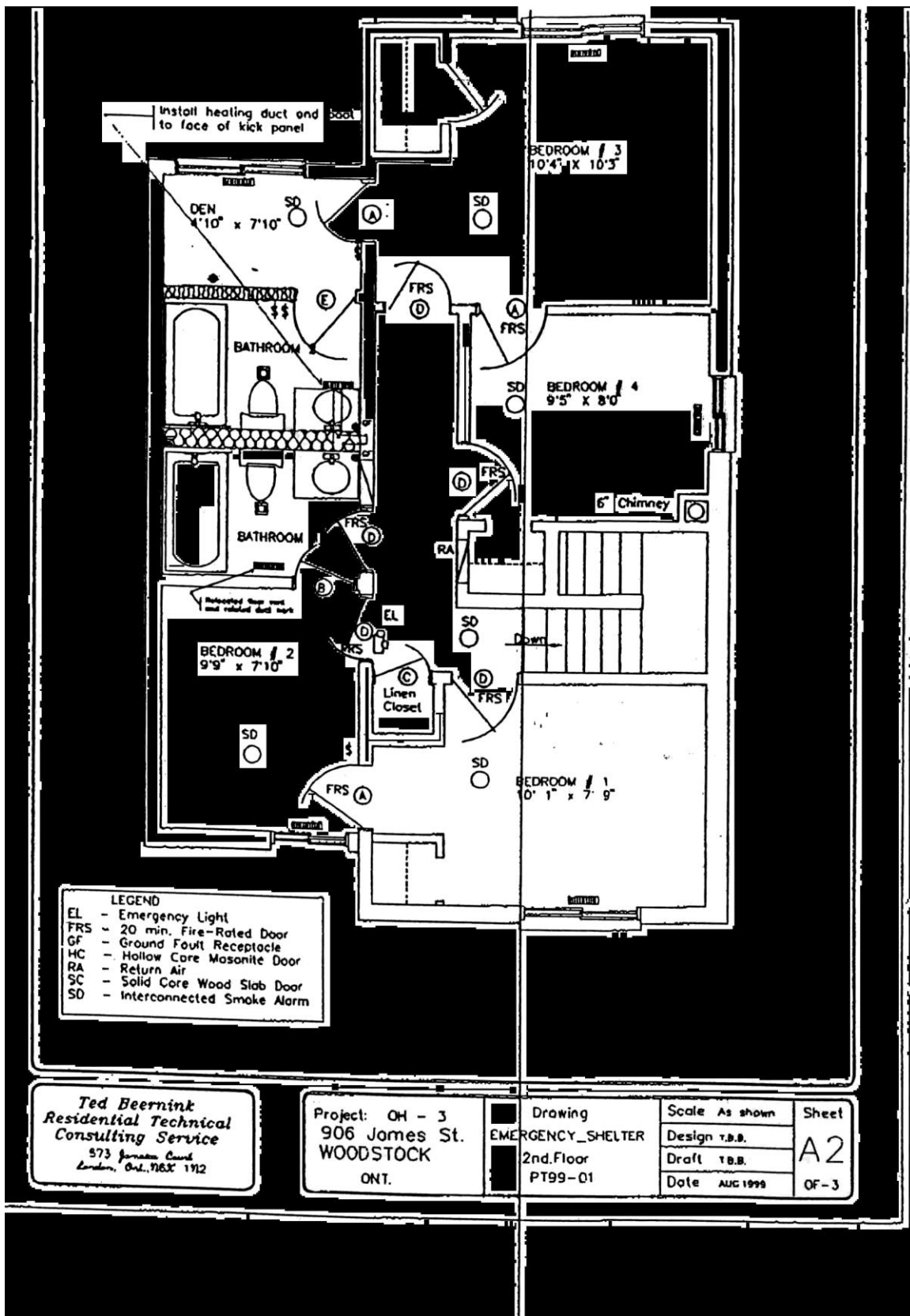
Family Transition Place - Rhonda Messerer, Transitional Support/Second Stage  
Housing Counsellor

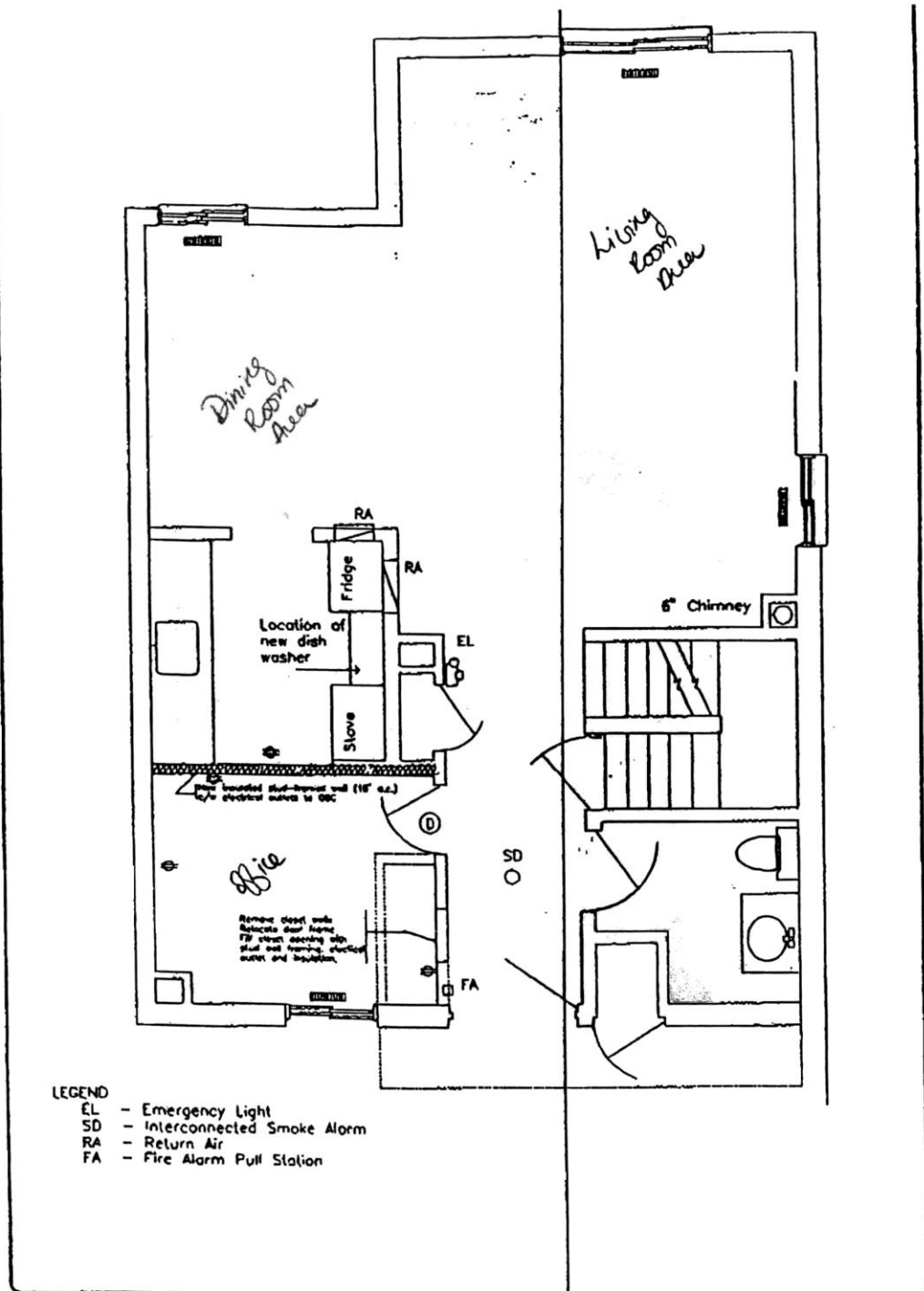
**APENDIX E**

**ATTACED COPY OF FLOOR PLAN**









**Ted Beernink**  
**Residential Technical**  
**Consulting Service**  
 573 Jamaica Court  
 London, Ont. N1E5X 1Y2

Project: OH - 3  
 906 James St.  
 WOODSTOCK  
 ONT.

Drawing  
 EMERGENCY\_SHELTER  
 First Floor  
 PT99-01

Scale As shown  
 Design T.B.B.  
 Draft T.B.B.  
 Date AUG.1999

Sheet  
**A1**  
 OF-3

## **APPENDIX F**

Research has been done for foundations that donate to services related to housing, youth or community services. Our shelter fund development plan includes sending proposals to these foundations.

Allstate Foundation of Canada  
Altamira Foundation  
Counseling Foundation of Canada  
Eli Lilly Canada  
Hewlett-Packard (Canada) Ltd  
Home Depot  
In-Kind Canada  
Kiwanis Clubs Eastern Canada  
Levi Strauss & Co. (Canada) Ltd.  
Nike P.L.A.Y. Canada  
Noranda  
Optimist International Foundation of Canada  
Proctor Gamble  
The Raptors Foundation  
Royal Canadian Legion  
Starbucks Foundation  
Toronto-Dominion Bank  
Ontario Ministry of Agricultural, Food and Rural Affairs  
Odette Charitable Foundation

## **APPENDIX G**

### **ATTACHED COPY OF SALVATION ARMY POLICY AGREEMENT**



## DUFFERIN HOUSING SERVICES

Dufferin County Housing Corporation  
51 Zina Street, Orangeville, Ontario L9W 1E5  
Tel: (519) 941-8221 Fax: (519) 941-9444



February 21, 2001

Lieutenant Jason Guy  
172 Broadway ave.  
Orangeville, on  
L9W 1J3

### Re: Supportive Assistance Program

Dear Lieutenant Guy,

As per your request, Dufferin Housing Services would like to extend our current service agreement with The Salvation Army Community and Family Services Supportive Assistance Program for the year 2001. The original intent of the program was to create a meaningful partnership with The Salvation Army to assist with the delivery of services to clients in need of lodging, food, and other essential services. The yearly maximum payment has been set at \$12000.

The initial terms of the agreement were probationary from December 01, 1999 through to May 31, 2000. A formal review did not take place at that time due to the transition of staff within The Salvation Army Orangeville Corps. Since that time, we have been working very closely with the new Director of Community and Family Services. We feel that we have had a very successful first year serving the needs of the community. This success is a direct result of the community building between Darrell Patey and Housing Services.

Dufferin Housing Services is currently working on another new initiative with the hope to further our partnership with The Salvation Army through the creation of a Second Stage House in Orangeville. We look forward to working with you to build a better community.

Sincerely,

Michelle Brown  
Housing Counsellor

Carl Ross  
Social Services Administrator

cc: Janice Peters Housing Supervisor

## **APPENDIX H**

### **ATTACHED LETTER OF SALVATION ARMY FUNDRAISING COMMITMENT**



The Salvation Army  
Orangeville

62 Broadway  
Orangeville, Ontario  
L9W 1J4

Tel: (519) 941-7591  
(519) 941-2570  
Fax: (519) 941-8461

Thrift Store  
Community and Family Services

Dufferin Housing Services  
51 Zina Drive  
Orangeville, Ontario  
L9W 1E5

April 22, 2001

Dear Sir / Madam:

This letter is to advise that the Salvation Army Community and Family Services plans to incorporate the Second Stage / Transitional Home in their fundraising campaigns. Dollars from these campaigns, Christmas Kettle and the National Red Shied Appeal helps us run programs in the local areas. We, at the Salvation Army - Community and Family Services Office in Orangeville will ensure that an allocation of this revenue will go toward the operation of the Second Stage/ Transitional Home.

In the event that you have any questions about our fundraising campaigns, please do not hesitate to contact the undersigned.

Sincerely,

Darrell Patey  
Community & Family Services Director

**APPENDIX I**  
**Market Value of Second Stage House**



12/07/00  
REG: 22

ONTARIO ASSESSMENT SYSTEM  
PROPERTIES ELIGIBLE FOR PAYMENT IN LIEU OF TAXES FOR COUNTY: 22 MUNICIPALITY 14  
ORANGEVILLE TOWN  
ONTARIO HOUSING CORPORATION

PAGE 24  
AGENCY PAGE 1

DATE COMMENCING JAN/01/2001

NAME/  
ADDRESS

ID OS ROLL NUMBER-  
PROPERTY DESCRIPTION

NSHD

RTC/RTV/SCHOOL SUPPORT

REALTY

ONTARIO HOUSING CORPORATION

P

O

010 001 082-00

0000

214

MP EP

477000

/

ONTARIO HOUSING CORPORATION P O 050 006 081-00 0000 214 RP EP 132000  
C/O DUFFERIN COUNTY HOUSING 35 SOUTH PARK DR TOTAL 132000  
AUTHORITY PLAN 73 M PT LOT 101 IRREG  
15 BRENDA BLVD SUITE 9 37.20FR  
ORANGEVILLE ON L9M 3YS  
LIST OF OCCUPANTS DIRECTING SCHOOL TAXES:  
SUB LOCATION TENANT NAME(S) OS SCHOOL TAX UNIT  
0001 35 SOUTH PARK DR T P SUPPORT P DIRECTION RU CLASS

The following information was taken from the listing of assessments of properties eligible for payment in lieu of taxes sent to us dated December 18, 2000 from the Ontario Property Assessment Corporation.

71 Emma Street South, Grand Valley, Ontario		\$646,000
22 Third Avenue, Orangeville, Ontario		\$477,000
35 South Park Drive, Orangeville, Ontario	\$132,000	
37 South Park Drive, Orangeville, Ontario	\$134,000	
42 Marion Street, Orangeville, Ontario	\$128,000	
44 Marion Street, Orangeville, Ontario	\$128,000	
24 Caledonia Road, Orangeville, Ontario	\$128,000	
26 Caledonia Road, Orangeville, Ontario	\$129,000	
36 Caledonia Road, Orangeville, Ontario	\$124,000	
38 Caledonia Road, Orangeville, Ontario	\$124,000	\$1,027,000
43 Bythia Street, Orangeville, Ontario		\$3,548,000
56 Bythia Street, Orangeville, Ontario		\$439,000
250 Simon Street, Shelburne, Ontario		\$2,072,000
207 William Street, Shelburne, Ontario		\$391,000
227 William Street, Shelburne, Ontario		\$782,000

## **APPENDIX J**

### **CONFIRMATION OF HOUSING COUNSELLOR CONTRIBUTION**



## DUFFERIN HOUSING SERVICES

Dufferin County Housing Corporation  
51 Zina Street, Orangeville, Ontario L9W 1E5  
Tel: (519) 941-8221 Fax: (519) 941-9444



April 20, 2001

Re: Confirmation of Housing Counsellor Contribution

To Whom it May Concern:

Dufferin Housing Services offers a Special issuance Housing Program. The Housing Program is a pro-active response to an increasing problem in locating and maintaining affordable accommodations for residents of Dufferin County. The Housing Counsellor is available to offer support and referral service to all residents of Dufferin County who are homeless or at risk of becoming homeless. The Housing Program may offer financial assistance specifically to non-social assistance recipients to help obtain and/or maintain affordable accommodation.

Currently the Housing Counsellor assesses the financial situation of the client to determine eligibility with the Ontario Works Program or the Special Issuance Housing Program. Dufferin Housing Services will extend this service to the clients of the Second Stage Transitional Housing Initiative. The Housing Counsellor will also work closely with the Salvation Army in the assessment, intake, and discharge process.

Dufferin Housing Services is committed to extending 17.5 hours per week of the Housing Counsellor position towards the Second Stage Transitional Housing Initiative.

Sincerely,

Janice Peters  
Housing Services Supervisor

## **APPENDIX K**

### **DONATON LETTER FROM UNITED WAY WELLINGTON GUELPH**





## UNITED WAY COMMUNITY SERVICES OF GUELPH AND WELLINGTON

85 Westmount Road,  
Guelph, ON N1H 5J2

Tel: (519) 821-0571  
Fax: (519) 821-7847

February 1, 2001

Kristina Sisson, Chairperson  
"Out-of-the-Cold" Youth Shelter  
60 Chisholm Dr, Unit 38  
Orangeville, ON L0N 1A0

Dear Ms. Sisson:

I am delighted to inform you that the Out-of-the-Cold Youth Shelter program has been approved for one-time funding in 2001. The allocation amount to this program is \$4,500.00. A cheque to the Hiwhois Assistance Group for this amount has been sent under separate cover to Classic Consultants.

Should you require further information with respect to any of the above, please contact our Executive Director, Morris Twist (519) 821-0571 ext.23.

On behalf of the Board of Directors I wish your agency continued success.

Yours truly,

Ken Boyd, President  
United Way Community Services of Guelph & Wellington  
Board of Directors

cc: Paul van Boxmeer, Classic Consultants

## "2 Million In 2000"

Charitable Reg. No.: 10745 7053 RR0001 Email: [info@unitedwayguelph.com](mailto:info@unitedwayguelph.com) Web Site: [www.unitedwayguelph.com](http://www.unitedwayguelph.com)

4-28-01: 8:00AM: UNIFIED WAY

## **APPENDIX L**

### **DONATION LETTERS FROM DUCA AND CLOROX**





**DUCA Financial Services Credit Union Ltd.**

Head Office:  
5290 Yonge Street  
P.O. Box 1100, Willowdale Stn A  
Toronto, Ontario  
M2N 5W5

Telephone: (416) 223-8502  
Facsimile: (416) 223-2575

Internet: [www.duca.com](http://www.duca.com)  
E-mail: [duca.info@duca.com](mailto:duca.info@duca.com)

-February 11, 2001

Out Of The Cold Youth Shelter  
60 Chisholm Street, Unit 38  
Orangeville, Ontario  
L9W 4P9

Attention: Kristina Sisson

Dear Kristina:

We are pleased to assist you in the kick-off for your fundraising campaign. We hope that our donation of \$300.00 will help cover the daily operating costs for one day as it is our understanding this is the approximate daily cost to operate the shelter.

The youth shelter is greatly needed in our community, as today's youth are often the forgotten victims of marital breakups and dysfunctional families. The shelter gives them the opportunity to stay off the streets and as begin to put their lives on track again.

Thank you for the opportunity of participating in your fundraising campaign.

Yours truly,  
DUCA Financial Services Credit Union Ltd.

A handwritten signature in dark ink, appearing to read 'Cheryl Harvey', written over a horizontal line.

Cheryl Harvey  
Branch Manager

*The Clorox Company  
of Canada, Ltd.  
A Principal Subsidiary of  
The Clorox Company*

**PRESS RELEASE**



The Clorox Company of Canada, Ltd., GLAD Manufacturing Plant in Orangeville donated \$11,000 to "Out-of-the-Cold" Youth Shelter located at 60 Chisholm Court in Orangeville. This shelter is a place for youth, 16 to 24 years of age, who need emergency housing or a place to stay for a longer time to get back on their feet. At present the shelter can accommodate 9 young people and one live-in volunteer.

The Clorox Company Foundation sponsors community development grants for Clorox's manufacturing facilities in the United States, Puerto Rico and Canada. Since its inception in 1980, The Clorox Company Foundation has awarded more than \$38 million to nonprofit organizations, schools and colleges.

The GLAD Manufacturing's Orangeville facility employs approximately 200 full-time associates who manufacture GLAD products for waste disposal, recycling and food packaging from coast to coast in Canada.

Presenting the cheque to "Out-of-the-Cold" Youth Shelter are Jim Stroupe, Director of Product Supply; Priscilla Scott and Linda Cornelius from the Charity Committee.

101 John Street  
Orangeville, Ontario  
Canada  
L9W 2R1  
Tel: (519) 941-0720  
Toll Free: (905) 457-3950

## **APPENDIX M**

### **ATTACHED COPIES OF SUPPORT LETTERS**





Monday, April 23, 2001

**To Whom It May Concern:**

Community Youth Services is pleased to provide this letter of support for the Supporting Community Partnerships Initiative "A Community Plan to Address Homelessness in Dufferin County".

Community Youth Services (CYS) is a joint initiative of the Town of Orangeville and Georgian College, funded by Human Resources Development Canada. Through Youth Resource Centres throughout Dufferin County, CYS offers youth access to career and employment resources, life skills programming and supportive guidance. A key component of our services is the work of the Youth Outreach Workers who assist youth with pre-employment barriers including housing.

Our organization receives a number of requests for service each year from individuals in desperate need of temporary housing and the Second Stage Housing Initiative is a very well thought out plan to address this gap in service in Dufferin County. It will fill a much needed service in the community.

If you require further information, feel free to contact myself at (519) 942-9986.

Sincerely,

Brenda Tye  
Coordinator, Community Youth Services

Cc. Wendy Goss, Director of Community Services – Town of Orangeville  
Peggie Tracey, Campus Manager – Georgian College

1 Armstrong Street  
Orangeville, Ontario  
Canada L9W 3H6

(t) 519.942.9986  
(f) 519.942.9371

"It all starts with youth"



Human Resources  
Development Canada

Développement des  
ressources humaines Canada



Town  
Of  
Orangeville

GEORGIAN  
YOUR COLLEGE YOUR FUTURE



April 10, 2001

TO WHOM IT MAY CONCERN:

**Re: Second Stage House Initiative**

Please consider this letter as endorsement of the Dufferin County Supporting Community Partnership Initiative.

We feel that this proposal is very appropriate and important for Dufferin County. This community\organization\agency, receive a number of requests for service each year from individuals and families in desperate need of temporary housing due to crisis situations or circumstances beyond their control. Temporary housing which allows the family unit to stay intact will provide the vital support that may make the difference between a family moving ahead, or remaining trapped in a cycle of homelessness.

The Housing Support portion of this service is a critical component of this proposal. The proposal contains elements essential to not only helping vulnerable persons obtain housing, but to keep it.

Given the constraints experienced by all social service agencies, we appreciate that The Salvation Army and Dufferin Housing Services are willing to work as a partnership on this project which will benefit Dufferin County as a whole.

Yours truly,

CALEDON DUFFERIN VICTIM SERVICES

Doreen Young  
Executive Director

18 Mill St BOLTON Ont L7E 1C1 (905) 951-3838 Fax (905) 951-2772



VOINet-Computer / Internet  
connecting.canadians  
Connectra

Dear VoINet Applicant,

We are pleased to inform you that your application for the VoINet service package has been approved. The next step in this process is to order your computer and then to set up your Internet connection.

Included with this letter is the VoINet brochure explaining the details of the SONA computers, the cost to your organization and the Computer Order Form. The following steps are necessary to getting your organization hooked up.

**\*\*Please keep this list\*\***

1. Detach and complete, in full, the "Computer Order Form" portion of the brochure. Keep the remainder of the brochure for your records.
2. Attach full payment (see payment options at the bottom of the form). **\*\*Please Note\*\*** SONA will only accept cheques if your organization's name is imprinted on the cheque. If not, or you are using a personal cheque - it must be certified (or a money order).

3. Return both to us as soon as possible.

VoINet c/o United Way of Bruce Grey. P.O. Box 1094, Owen Sound, ON. N4K 6K6

4. Your computer will arrive in (approx.) 3-4 weeks from our receiving your form with payment. When you receive your computer, we recommend that you call Carolyn at Hurontario Net for your Internet hook up at 519-925-6422. If there are questions about your computer, you should call SONA's Tech Support Line at 1-800-263-3787.
5. Email me your computer and monitor's serial number at [uwaybg@log.on.ca](mailto:uwaybg@log.on.ca)

We look forward to working with you in the future. If you have any questions, do not hesitate to call our office.

*March 7, 2001*

Greg Chaban  
VoINet Program Coordinator,  
United Way of Bruce Grey.  
(519) 376-1560



Government of Canada  
Government du Canada

Canada

Funded by Industry Canada's VoINet Program



United Way



THE CORPORATION OF THE TOWN OF ORANGEVILLE

Municipal Building  
87 Broadway  
ORANGEVILLE, Ontario  
L9W 1K1

Telephone (519) 941-0440  
Toll Free 1-866-941-0440  
Fax (519) 941-9033

February 28, 2001

Ms. K. Sisson  
Out-of-the-Cold Youth Shelter  
60 Chisholm St.  
Unit 38  
ORANGEVILLE, ON  
L9W 4P7

Dear Ms. Sisson:


Thank you for attending the Council meeting on February 26, 2001, to provide information on the youth shelter. As you are aware, following your presentation, Council passed the attached motion.

Your request for financial support will be considered on April 30, 2001, when the operating budget is set for the year. You are welcome to attend the meeting, or you may contact the Treasurer, Bruce Taylor, ext. 238, following the meeting and he will let you know if your request has been granted. You should also contact the Treasurer regarding tax bill inserts.

The Mayor's office will be providing the requested letter of support. The shelter has been included in the social agencies section of the Town's web page (print out attached).

We congratulate you on a successful first year of operation, and wish you continued success in your fund raising efforts and plans to extend the service provided.

Yours truly,

  
Linda J. Dean, A.M.C.T.  
Town Clerk

c. B. Taylor  
W. Goss



## Lavender Lane Co-operative Homes Inc.

61 Second Street, Unit #20  
Orangeville, Ontario L9W 4W1

(519) 941-9330  
fax (519) 941-9334

March 20, 2001

To Whom It May Concern:

### **Re: Second Stage Housing Initiative**

Please consider this letter as an endorsement of the Dufferin County Supporting Community Partnership Initiative.

As a present non-profit housing provider in Dufferin County, we feel that this proposal is very appropriate and important for Dufferin County. Each year, we receive numerous requests for housing from individuals and families in desperate need of immediate temporary housing due to a family crisis or situation beyond their control. Temporary housing which allows the family to stay intact will provide the vital support that may make the difference between a family moving ahead, or remaining trapped in a cycle of homelessness.

The Housing Support portion of this service is a critical component of this proposal as it contains elements essential to not only helping vulnerable persons obtain housing, but to keep it. We also applaud The Salvation Army's willingness to work with Dufferin Housing Services in partnership to fund the project.

We would also like to endorse the other portion of the proposal for the expansion of services to homeless youth at the Out of the Cold Youth Shelter. We consider any investment in our youth critical to breaking the cycle of homelessness now and in the future.

Sincerely,



Ivy Tait  
President

on behalf of the Board of Directors



## FAMILY TRANSITION PLACE

20 Bredin Pkwy., Orangeville, Ontario L9W 4Z9  
Website: [ftp.on.ca](http://ftp.on.ca) e-mail: [admin@ftp.on.ca](mailto:admin@ftp.on.ca)

(519) 942-4122  
Fax: (519) 942-8243

SERVING DUFFERIN and NORTH PEEL

April 18, 2001

To Whom it May Concern:

**Re: Second Stage House Initiative**

Family Transition Place is a social service agency which provides a comprehensive range of services to abused women and their children in Dufferin County. We have operated an emergency shelter since 1985 and a Second Stage Housing Program since 1988. We are writing this letter to endorse the Dufferin County Supporting Community Partnership Second Stage House Initiative.

It is evident to us that this proposal is most appropriate and sorely needed in Dufferin County. We receive a significant number of requests each year from persons in need of temporary housing due to crisis situations or circumstances beyond their control. Unfortunately we do not have the space nor does our mandate accommodate all such persons. Temporary housing such as that being proposed which would allow the family unit to stay intact would provide the necessary support that could make the difference between a family moving ahead, or remaining in a cycle of homelessness.

We are particularly glad to see that the Housing Support portion of this service contains elements essential to helping vulnerable persons obtain and keep their housing.

Given the constraints experienced by all social service agencies, Family Transition Place sees the collaboration of the Salvation Army and Dufferin Housing Services as a benefit to Dufferin County as a whole.

Sincerely,

Doreen Armstrong  
Executive Director  
Family Transition Place

Operated by Family Transition Place (Dufferin) Charitable Registration #BN10737 6378 RR0001

• 24 Hour Crisis Line (519) 941-4357 or 1-800-265-9178  
• Emergency Shelter • Counselling Services • Legal Information & Support • Emergency Transportation  
• Second Stage Housing • Education & Prevention • Advocacy & Social Action



**Dufferin  
Association for  
Community  
Living**

14 Stewart Court, Suite 100  
Orangeville, Ontario L9W 3Z9  
(519) 941-8971 Fax: 941-9121

April 17, 2001

**Adult Day Services:**

Day Programs

Employment  
Supports

Residential  
Supports

**Support Services:**

Pre-school Resource  
Program

Summer Program

Family Relief

Rolling Hills  
Children's Place

To Whom It May Concern:

**RE: SECOND STAGE HOUSE INITIATIVE - OUT OF THE COLD  
DUFFERIN COUNTY**

Please consider this letter as endorsement of the Dufferin County's Supporting  
Community Partnership Initiative - SCPI.

We feel this proposal is very appropriate and important for Dufferin County. This  
agency is aware of the need for emergency housing within Dufferin County.  
Temporary housing which allows the family unit to stay together, will provide the  
vital support that may make the difference between persons moving ahead or  
remaining trapped in a cycle of homelessness.

The Housing Supports offered in this service is a critical component of this  
proposal. The proposal contains elements essential to not only helping vulnerable  
persons obtain housing, but to keep it. Dufferin Association for Community  
Living has experienced and continues to experience first hand the gaps in  
affordable housing in Dufferin.

Given the constraints experienced by all social service agencies, we appreciate that  
The Salvation Army, Out-of-the-Cold in conjunction with Dufferin Housing  
Services, are willing to work as a partnership on this project which will benefit  
Dufferin County.

Sincerely,

**Marcia MacPherson**  
Director, Community & Support Services

*Helping people with developmental handicaps participate fully in our community ... since 1954.*

MEMBER OF THE CANADIAN AND ONTARIO ASSOCIATIONS FOR COMMUNITY LIVING

Charitable Donor No. 0175372-11-15



**Hiwhois Assistance Group**  
**P.O.Box 606**  
**135 Bayfield Street, Suite 102**  
**Barrie, ON L4M 4V1**

April 19, 2001

County of Dufferin  
51 Zina Street  
Orangeville, ON  
L9W 1E5

Dear Mr. Ross and Members of Council,

We are pleased to write this letter of support for the Out-of-the-Cold Youth Shelter. Hiwhois Assistance Group and Out-of-the-Cold Youth Shelter have been working effectively together since December of 1999. Both organizations have a strong commitment to deal with the housing and support needs of youth in our county. The resources provided by the SCPI program will provide a much-needed extension to the work already started by volunteers and the community at large and will support a strong base for growth and sustainability of this much needed community resource.

With this letter we support the application for funding and acknowledge our commitment to act as the incorporated, sponsoring body, to be responsible for cash flow to the shelter and to ensure fiscal accountability and the submission of necessary reports.

Thank you for incorporating the needs of youth into the proposal, A Community Plan to Address Homelessness in Dufferin County. We appreciate your interest and support.

Sincerely,

A handwritten signature in black ink, appearing to read 'Doug Robinson', with a stylized flourish at the end.

Doug Robinson  
Chairperson, Hiwhois Assistance Group

## **APPENDIX N**

### **ATTACHED COPIES OF NEWS PAPER ARTICLES TO DEMONSTRATE COMMUNITY SUPPORT OF THE OUT OF THE COLD PROGRAM**

# Overnight shelter for youth to open in Orangeville

By TRAVIS MEALING

Banner Staff Writer

A soft bed in a warm house will soon replace the cold, hard street as an option for homeless youth in Orangeville.

The Dufferin County Youth Task Force, with help from the Orangeville Kinsmen Club and the Hiwchois Assistance Group, will open the doors of an emergency overnight shelter within the next two weeks. It will be located at 60 Chisholm St., Unit 38.

"One of the things we'll be doing that's most important is listening to the stories of youth... so we can plan what kind of support we need to provide in the future," said Kristina Sisson, the task force leader.

The three-bedroom townhouse will be furnished with bunk beds to accommodate up to 10 homeless youth at any one time; only those between the ages of 16 and 24 will be accepted.

It will operate between 6 p.m. and 8 a.m., so youth in need will have a warm place to stay at night.

"There will be a couple here in the home and volunteers here every night," said Sisson, adding these supervisors will receive training.

Hiwchois is picking up the rent on the home and charging the task force \$1 a year. And because the task force is not an incorporated body, the Kinsmen Club is the name that appears on the lease.

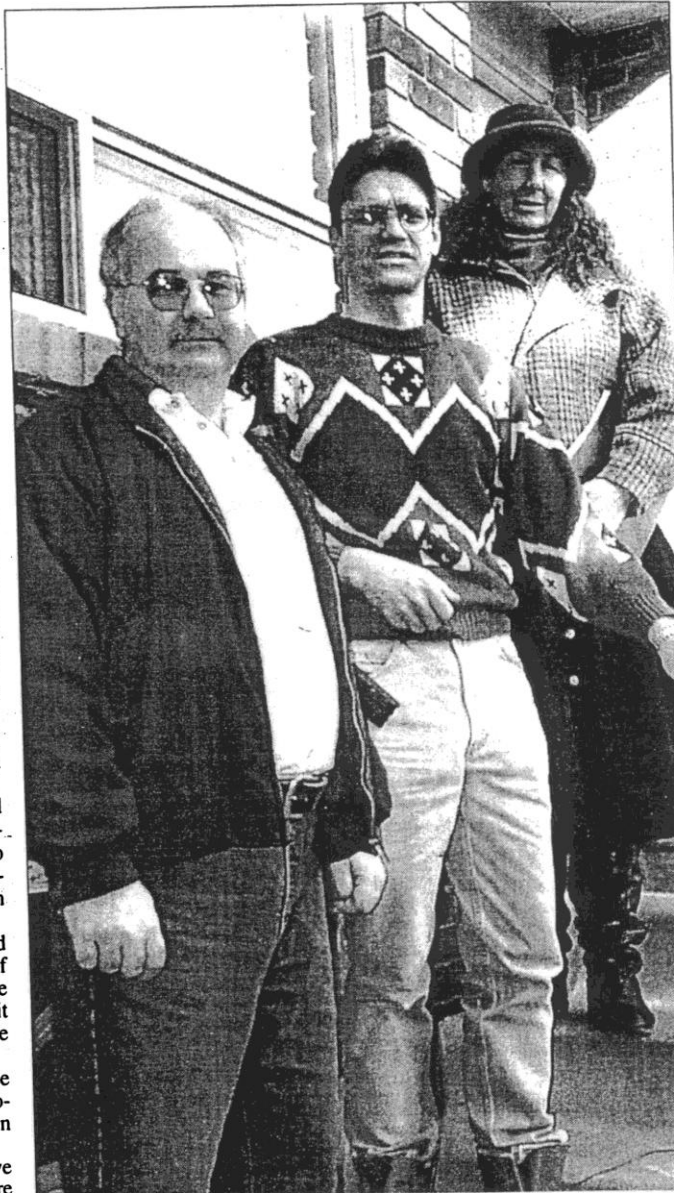
Ted White is a Kinsmen life member and the liaison between the club and the task force.

"There's a gap in services being provided to youth," he said, explaining the club's reason for supporting the project. "Our motto with the Kinsmen is 'Serving the community's greatest need,' and I guess this fits in with that."

Youth at the shelter will receive supper and breakfast, and will help out with the care of the house in return. Sisson says the task force has yet to decide whether they will set a limit on the maximum number of days someone can stay there.

Other rules are more clear. No one will be allowed in if they are high on drugs or alcohol. Nor will anyone with drugs or alcohol in their possession get through the door.

"We want to be the best neighbours we can," said Sisson, noting she is hopeful there





will be no conflicts between shelter occupants and other residents of the townhouse development, roughly half of which consists of subsidized housing.

Notices were sent to 2,400 homes in the immediate area in order to keep neighbours informed of the shelter.

Meanwhile, the task force is still actively seeking donations of dishes, furniture, food and more. As White says, "We're not lacking food, about being thankful for asking for help."

For more information, contact Sisson at 942-9986. The shelter can be reached directly at 942-5970. Those who wish to make a financial contribution can do so through the Hyvriks shelter account at Scotiabank.

Sisson and White share a sense of optimism the project will be a success.

An emergency overnight shelter for people has been the dream of 1 and 2 is now open at 601 Oakfield St., Unit 44. Among those helping the project are Kristina Sisson (right) of the Dufferin County Youth Task Force, Kim Jasper (center), president of the Orangeville Kiwanis Club, and Ted White, the Kiwanis' liaison with the task force.

There's no question the need is there," noted White. "Hopefully, with all the groups involved, we can make work."

# The Banner

Serving Orangeville and Area Since 1893

TUESDAY, February 13, 2001

## Youth shelter celebrates its first-year anniversary

The Out of the Cold youth shelter celebrated its one-year anniversary on Sunday with an open house.

Out of the Cold, located at 60 Chisholm St. provides emergency and transitional housing for youth in need of a place to stay.

Shelter chairperson Kristina Sisson said in its first year of operation, the shelter survived entirely on donations from the community.

"Everything has come from the community. I can't tell you enough how important

the community support has been," she said.

At the open house the shelter's supporters were thanked for their efforts and a new fundraising plan was announced.

The Orangeville Kinsmen were thanked for signing the shelter's lease and helping with the hydro bills.

The Hiwhois Assistance Group was thanked for paying the shelter's rent for the first year.

...Continued on page 2.

## Youth shelter launches new fundraiser

...Continued from page 1.

It was Hiwhois who first offered the home to the shelter's organizers.

To kick-off the shelter's 'A Day in the Life' fundraiser, Cherryl Harvey, Branch manager of the DUCA Credit Union was on hand, providing the first donation of a 'day'.

Sisson said the cost of running the shelter for a day is \$300.

"The message we need to get out to people is every penny is important," she said.

Since the Out of the Cold opened its doors last year, 47 young people have sought shelter there.

The four-bedroom shelter gets referrals from police, Children's Aid, Family Transition Place and other sources and can accommodate nine people at a time.



Eden Bolleau/The Banner

Many thanks were given to supporters of the Out of the Cold youth shelter at its first year open house on Sunday. The shelter also received the first donation toward their new 'Day in the Life' fundraiser. From left Kinsmen member Victor Henrique accepts a certificate of appreciation, Diane Goody of the Dufferin Youth Action Council also accepts a certificate of appreciation, deputy mayor Nick Garisto offers a congratulations certificate to shelter chairperson Kristina Sisson. Sisson is also accepting a cheque for \$300 from Cherryl Harvey, branch manager of DUCA Financial Services.





June  
Dance  
Event

Sharon Foote/The Banner

Jamie and Karen Moffat were two of 160 people who enjoyed the fundraising linedance at Tony Rose Memorial Sports Centre on Friday night in aid of the "Out of the Cold" Youth Shelter. The dance raised \$1,600. Actual Amount \$1,738.

## Big boost for shelter

Clorox presents



Sharon Foote/The Banner





## **“Out-of-the-Cold-House” Youth Shelter**

To Whom It May Concern,

I am proud to nominate the dedicated volunteers of “The Out of the Cold” Youth Shelter in Orangeville Ontario. I have had the pleasure to work closely with this group of caring individuals for the past year..

The shelter has just celebrated its first anniversary .It has been a challenging but very rewarding year. The shelter owes its success to the support provided by the volunteers who have given countless hours of their time keeping the shelter open every night , cooking meals, shopping , cleaning , fundraising , doing outreach , recruiting and training volunteers , creating community awareness and supporting the 50 clients that have used the facility in the last year

Community contributions of furniture, food, bedding and household items as well as monetary donations have supplied the shelter with the necessities that make the it a comfortable home. Monthly rent was generously donated by Hiwhois Assistance Group . Our volunteers also make up an Advisory Group and a Steering Committee . The success of the shelter is especially significant because there has been no funding from any level of government . The citizens of Dufferin County support and sustain this shelter because they believe in the real need to assist homeless youth within their own community .

To recognize and honour the special members of this caring and generous community , I respectfully nominate the volunteers of the “Out of the Cold “ Youth Shelter to be publicly acknowledged for their contributions to the lives of the most vulnerable youth in our society. Yes , volunteers do make a difference— just ask any of the young people who have used the shelter! Thank you for considering this nomination.

Sincerely,

  
Lisa DeZotti , Volunteer Coordinator

60 Chisholm Dr., Unit #38 — Orangeville Ontario, L9W 4P7 — (519) 942-5970

Supported By: The Dufferin Youth Action Council , Hiwhois Assistance Group and the Klansmen Club of Orangeville