



A Community of Choice

Business Support Office

Toll Free: 1-888-4THEHAT (484-3428)

Direct: (403) 529-8373

Fax: (403) 502 – 8055

Email: keicru@medicinehat.ca

Website: www.medicinehat.ca



STATISTICAL INFORMATION

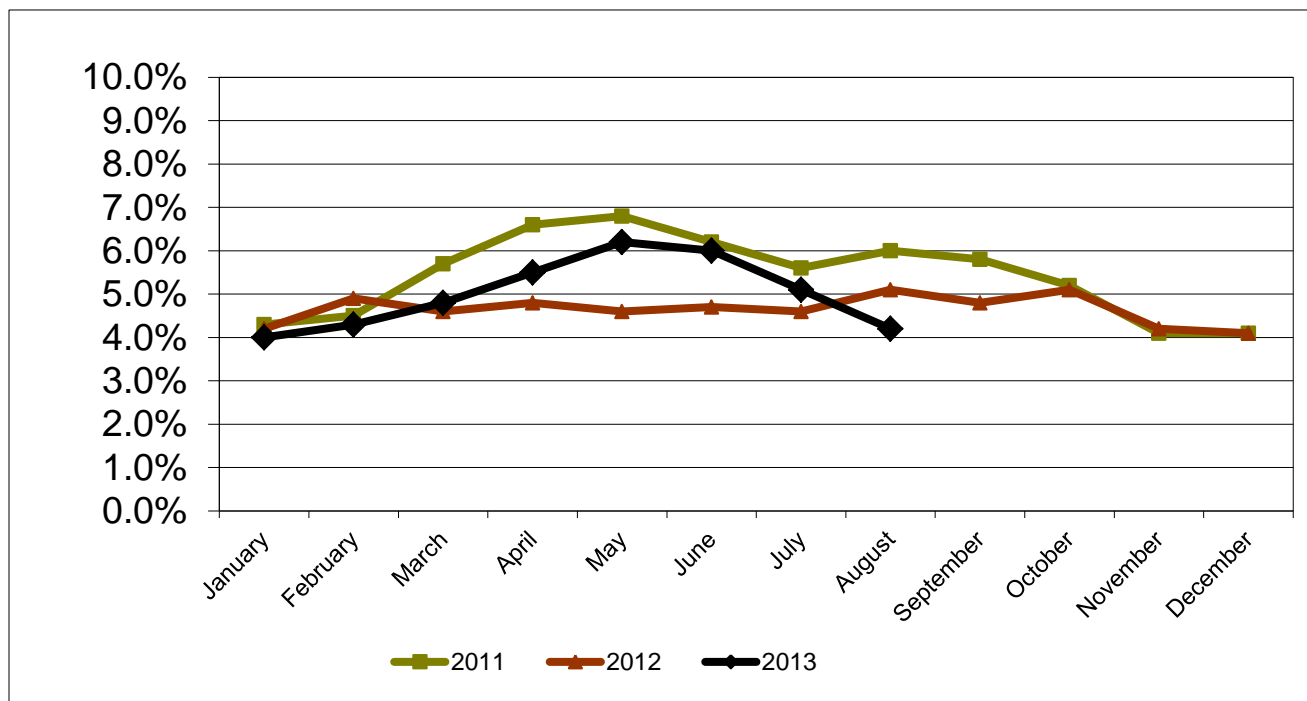
Month Ending August 2013

MEDICINE HAT AND AREA

9/18/2013

MEDICINE HAT REGION

UNEMPLOYMENT STATISTICS - UNADJUSTED

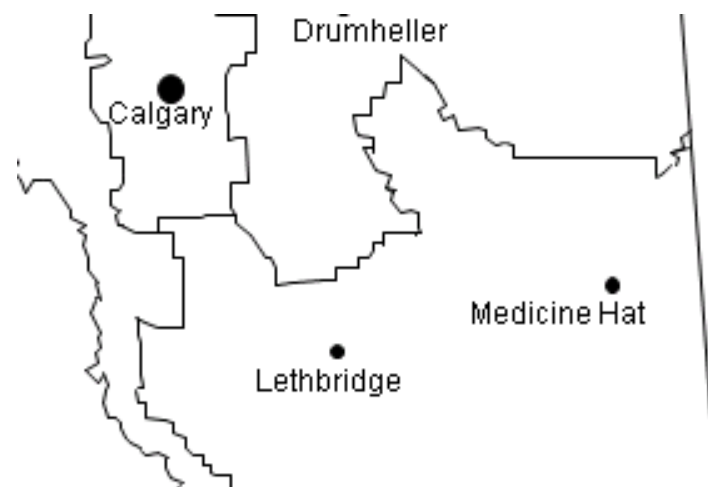


* Unemployment Rates for Economic Region 810, which includes Lethbridge and Medicine Hat.

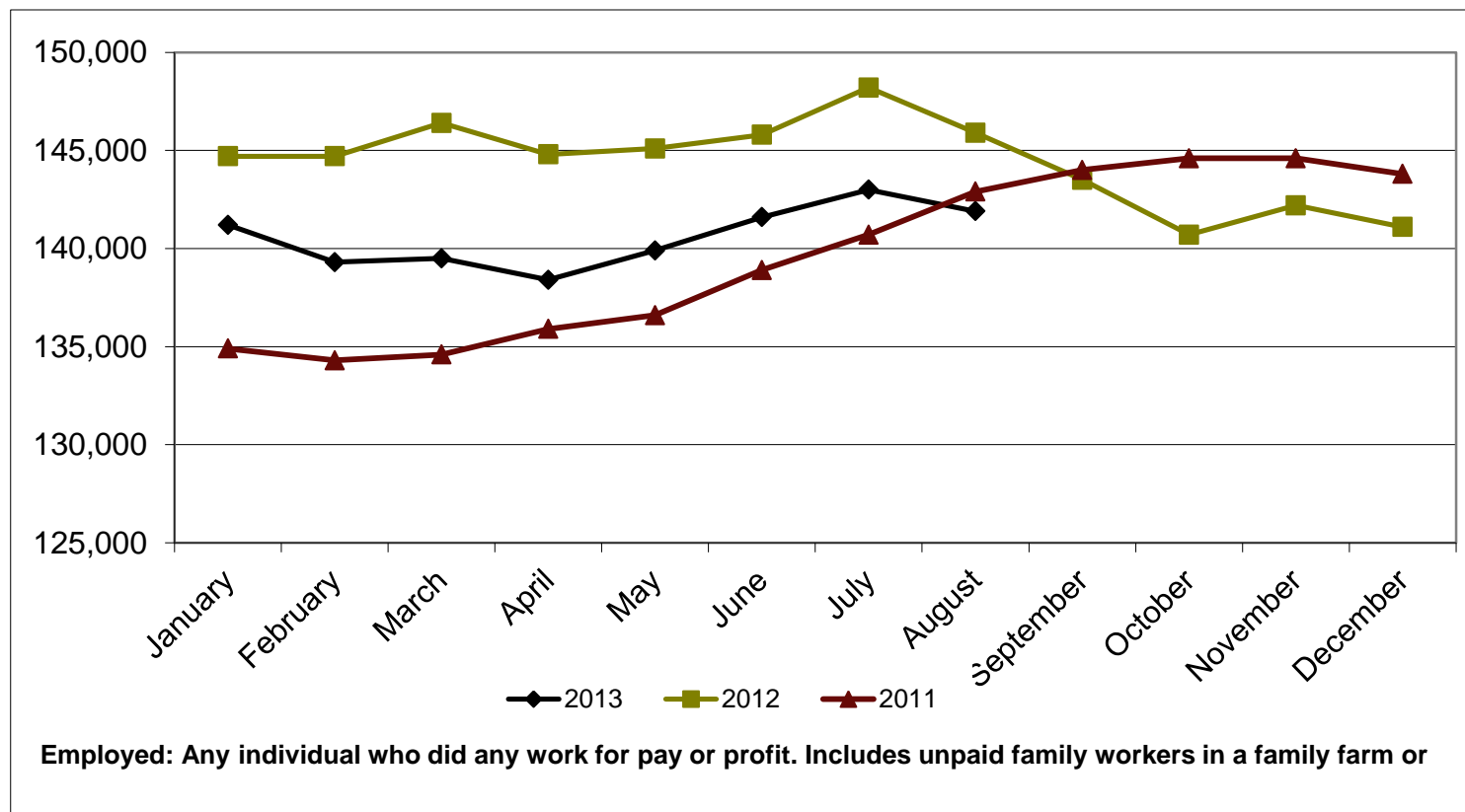
Source: Statistics Canada

MEDICINE HAT REGION UNEMPLOYMENT STATISTICS - UNADJUSTED

	2008	2009	2010	2011	2012	2013
January	4.6%	4.0%	6.0%	4.3%	4.2%	4.0%
February	4.7%	4.7%	6.4%	4.5%	4.9%	4.3%
March	5.0%	4.9%	7.1%	5.7%	4.6%	4.8%
April	4.4%	5.3%	7.0%	6.6%	4.8%	5.5%
May	3.4%	5.2%	7.5%	6.8%	4.6%	6.2%
June	2.1%	5.5%	7.2%	6.2%	4.7%	6.0 %
July	2.0%	5.5%	6.9%	5.6%	4.6%	5.1 %
August	2.4%	6.9%	6.5%	6.0%	5.1%	4.2 %
September	3.0%	7.0%	6.1%	5.8%	4.8%	
October	3.1%	6.6%	5.5%	5.2%	5.1%	
November	3.0%	5.5%	4.5%	4.1%	4.2%	
December	3.1%	5.4%	4.3%	4.1%	4.1%	

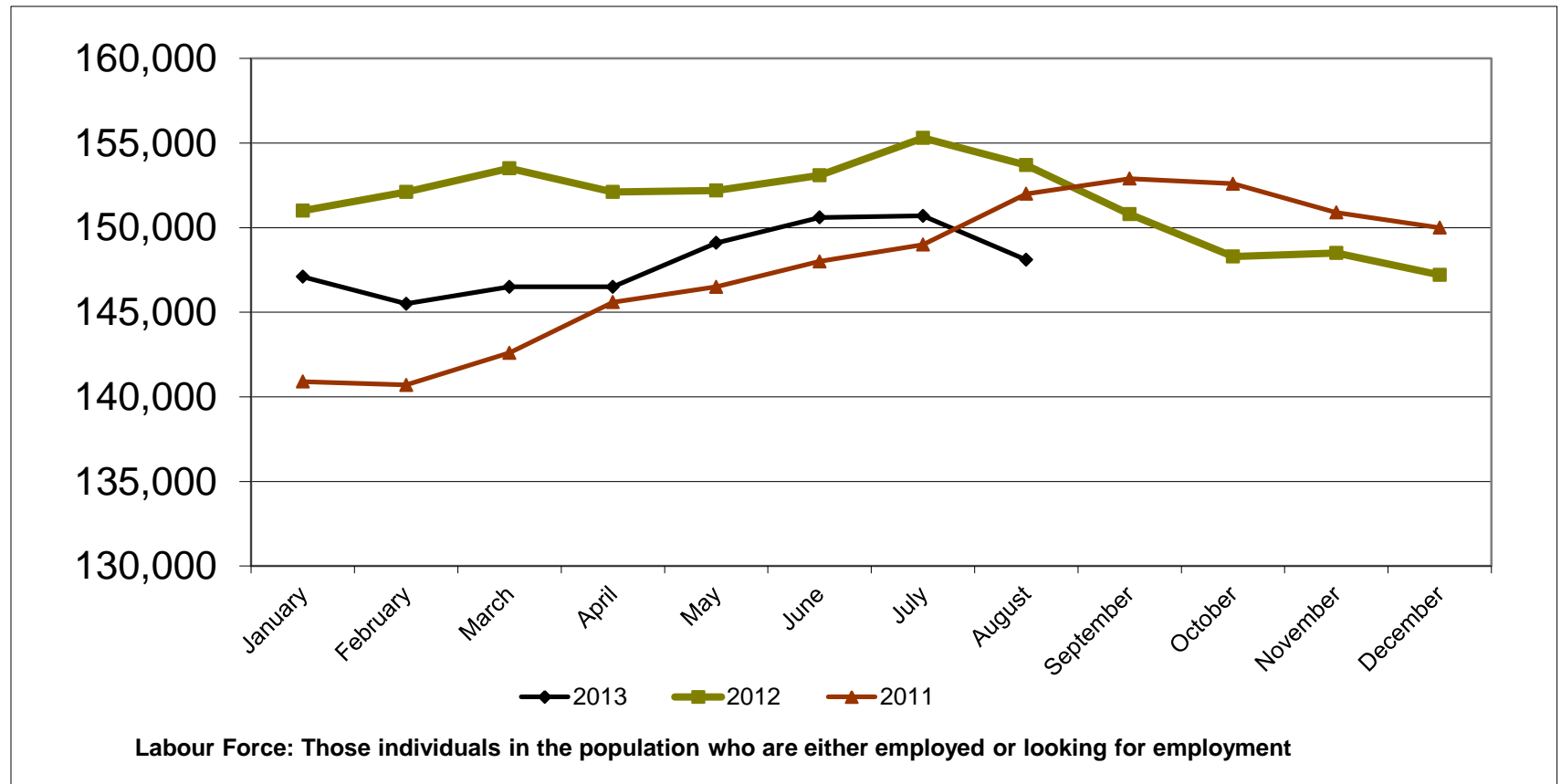


MEDICINE HAT REGION EMPLOYMENT COMPARISONS



Source: Statistics Canada

MEDICINE HAT REGION LABOUR FORCE COMPARISONS



MEDICINE HAT – NEW BUSINESS LICENSES

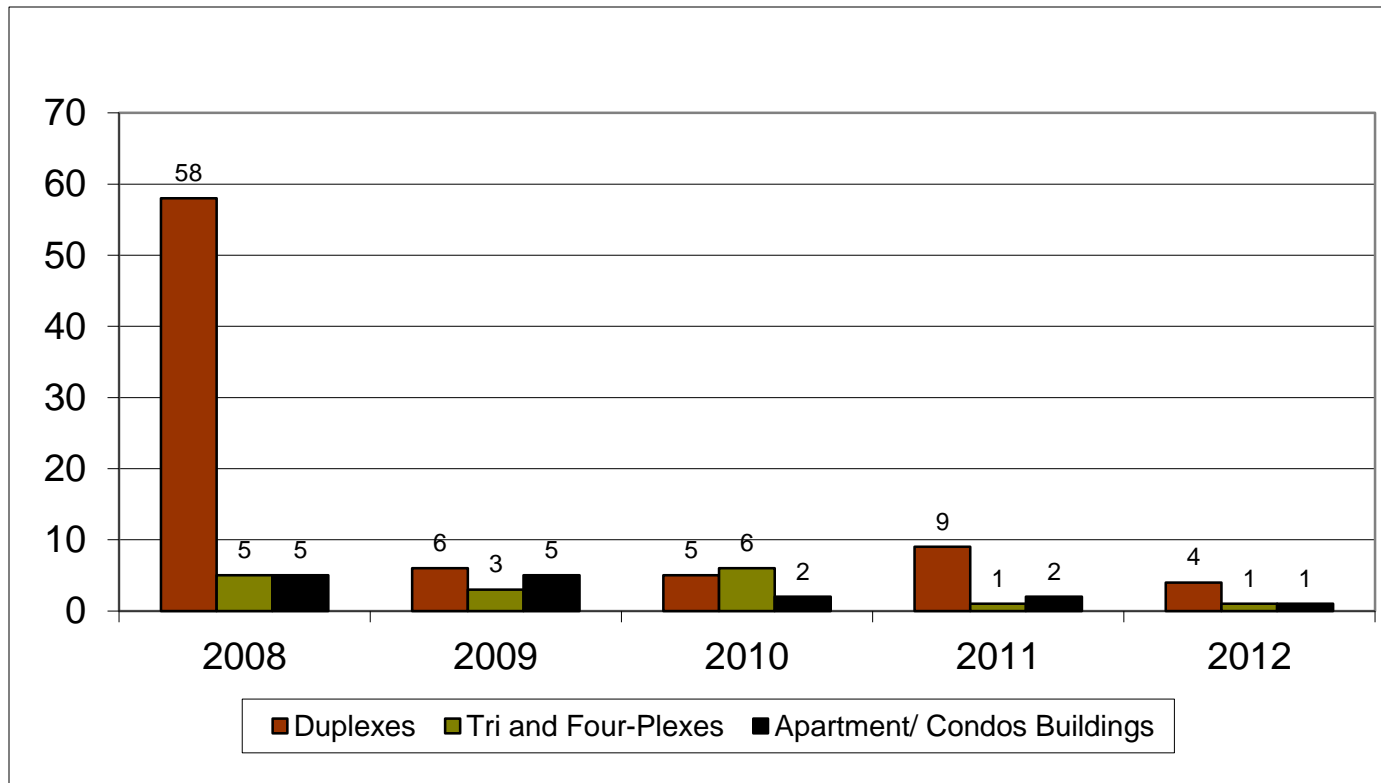
	2004	2005	2006	2007	2008	2009	2010	2011	2012	2013
January	49	33	46	44	54	47	34	33	31	35
February	36	31	41	38	38	31	34	25	44	32
March	45	44	60	46	45	72	52	41	55	36
April	54	52	57	48	64	64	45	42	37	53
May	35	55	87	67	49	55	56	61	49	43
June	42	56	54	64	54	45	41	50	34	42
July	36	49	27	34	40	42	34	37	33	49
August	36	57	46	61	29	35	47	52	44	43
September	45	43	35	41	46	44	30	39	39	0
October	39	39	31	39	63	34	39	26	38	0
November	45	30	59	35	38	27	39	34	27	0
December	34	22	23	27	18	32	42	36	21	0
Total	496	511	566	543	538	528	493	476	452	0

- Data includes total of both home-based and commercial businesses
- Home-Based includes businesses by an occupant of a residential building.
- Commercial includes businesses that are not zoned residential.

MEDICINE HAT – ACTUALS FOR 2011 – 2012 FORECAST SUMMARY FOR 2013 & 2014

Medicine Hat Forecast Summary				
	2011	2012	2013f	2014f
New Home Market				
Single-Detached Starts	130	226	240	250
Multi-Family Starts	20	58	60	65
Total Starts	150	284	300	315
Resale Market				
Total Sales	1,217	1404	1375	1460
Total Average Price	\$248,277	\$258,802	\$262,000	\$267,000
Rental Market				
Apartment Vacancy Rate	9.4%	7.0%	4.4%	
Average 2-Bdrm Apartment Rent	\$698	\$705	\$709	
*Source: Medicine Hat Real Estate Board, CMHC, CMHC Forecast Q2 & Q3 2013				

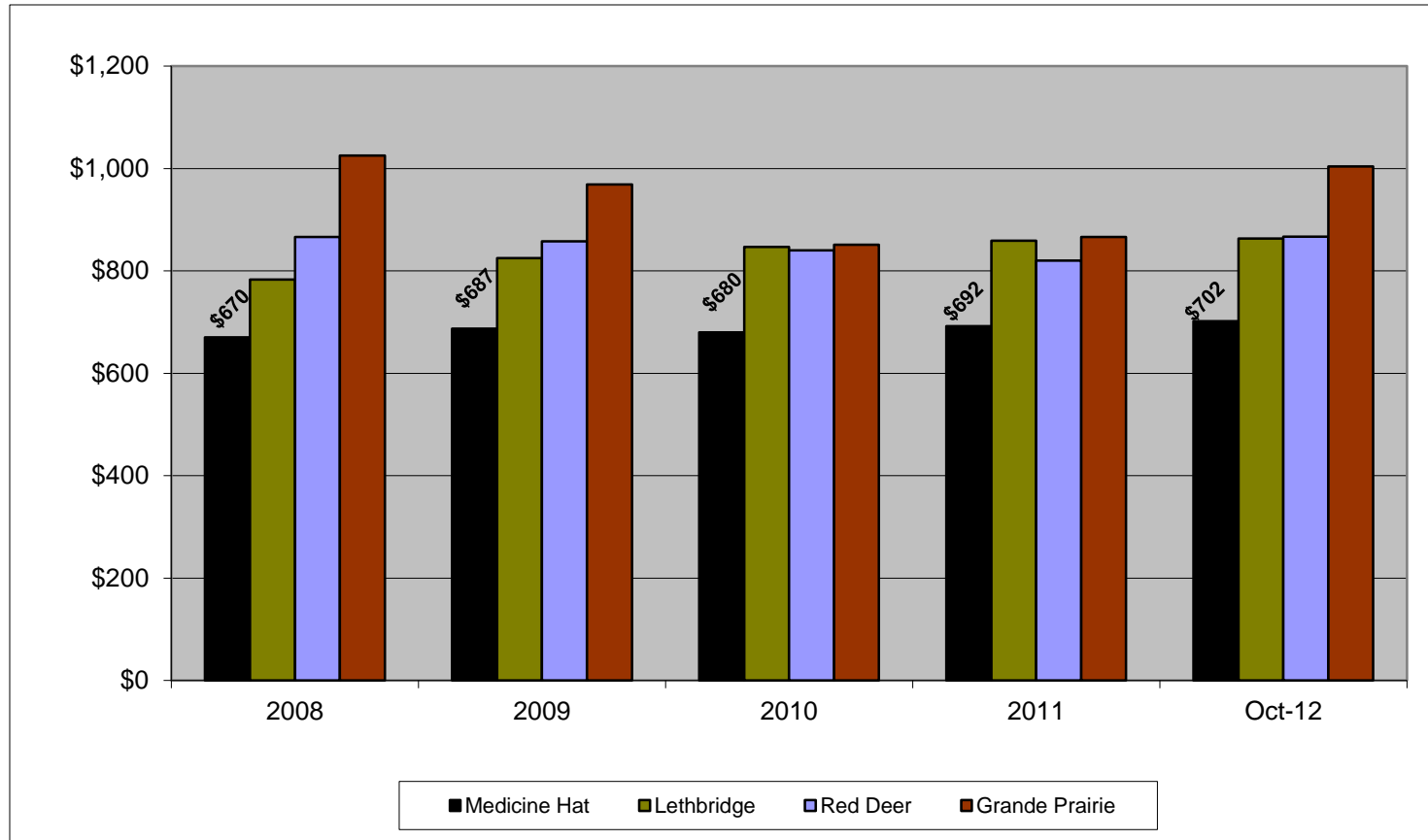
MEDICINE HAT 5-YEAR MULTI-FAMILY BUILDING DEVELOPMENT



Source: City of Medicine Hat – Planning, Building & Development Department

data based on overall buildings (not on single units)

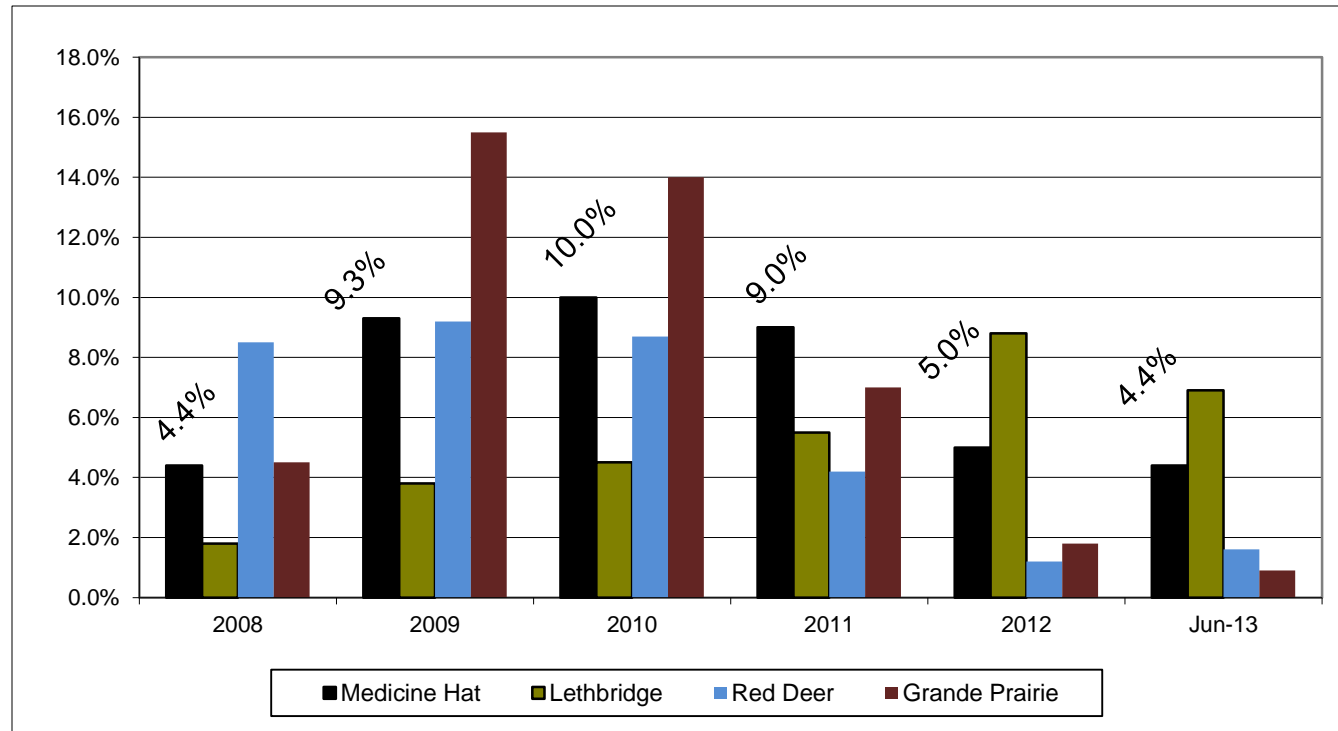
AVERAGE 2-BEDROOM RENT ALBERTA CITIES



Source: Canada Mortgage & Housing

VACANCY RATES ALBERTA CITIES

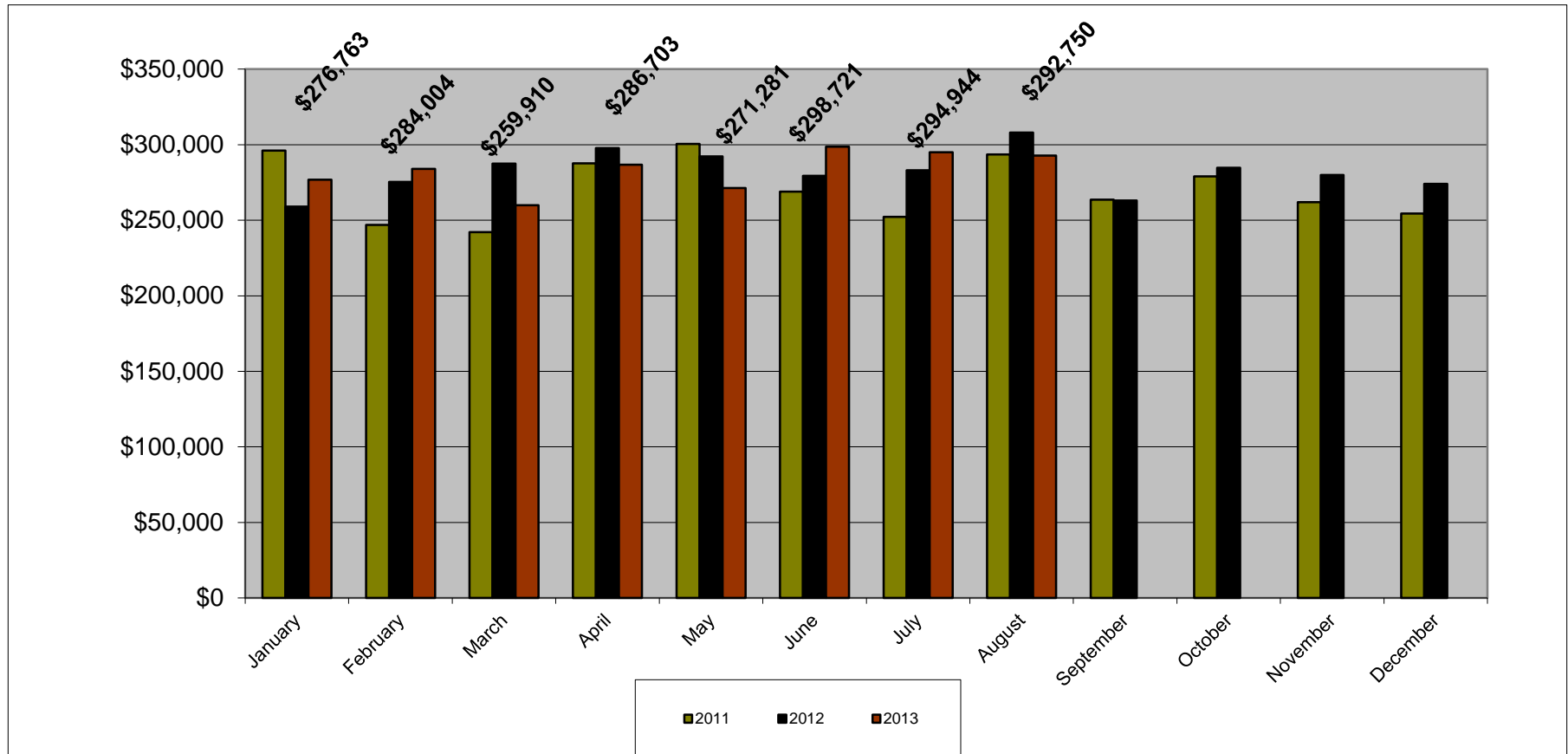
Private Structures with 3 or more apartments



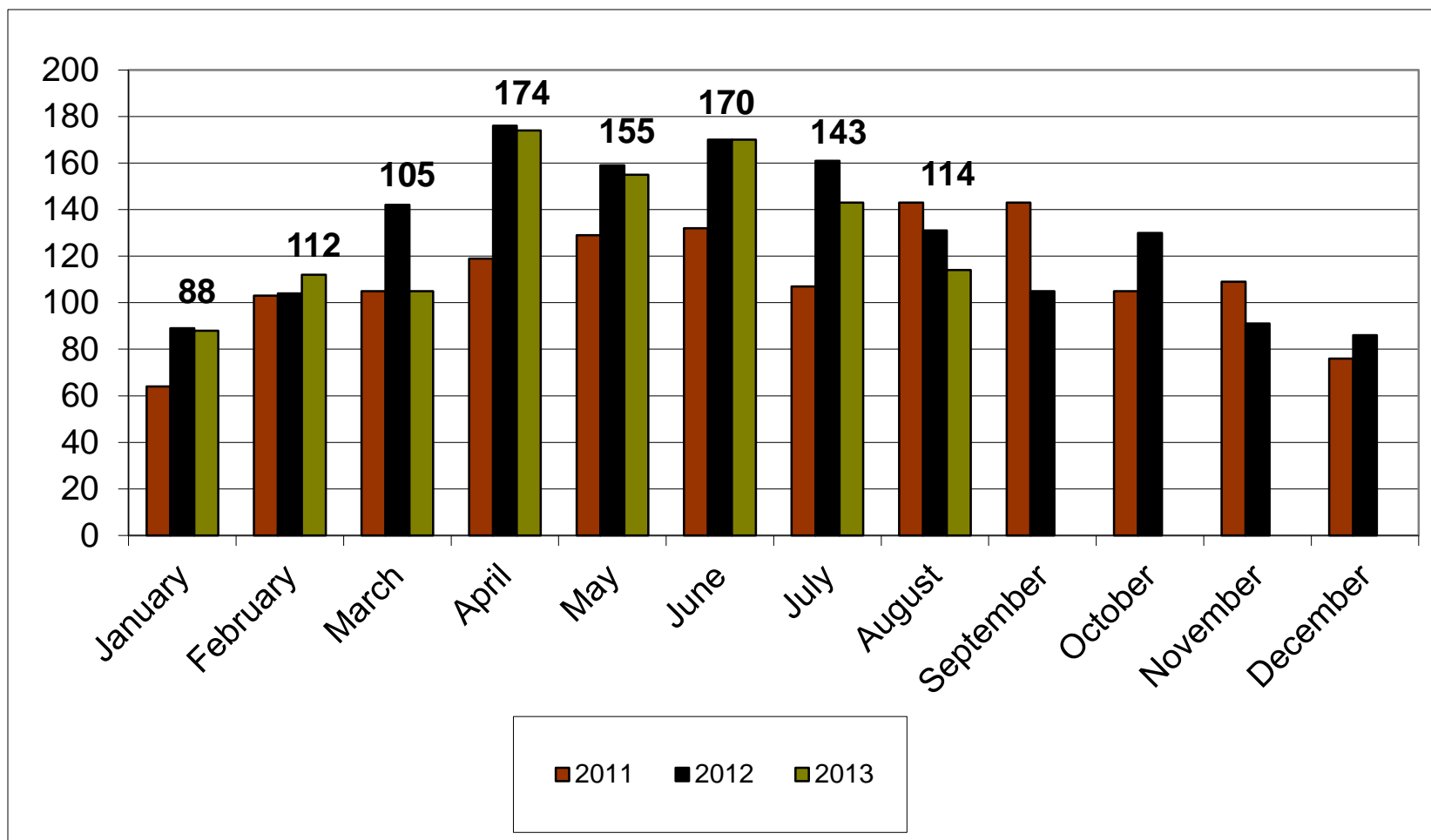
Source: Canada Mortgage & Housing

10

MEDICINE HAT AVERAGE RESIDENTIAL SALE PRICE



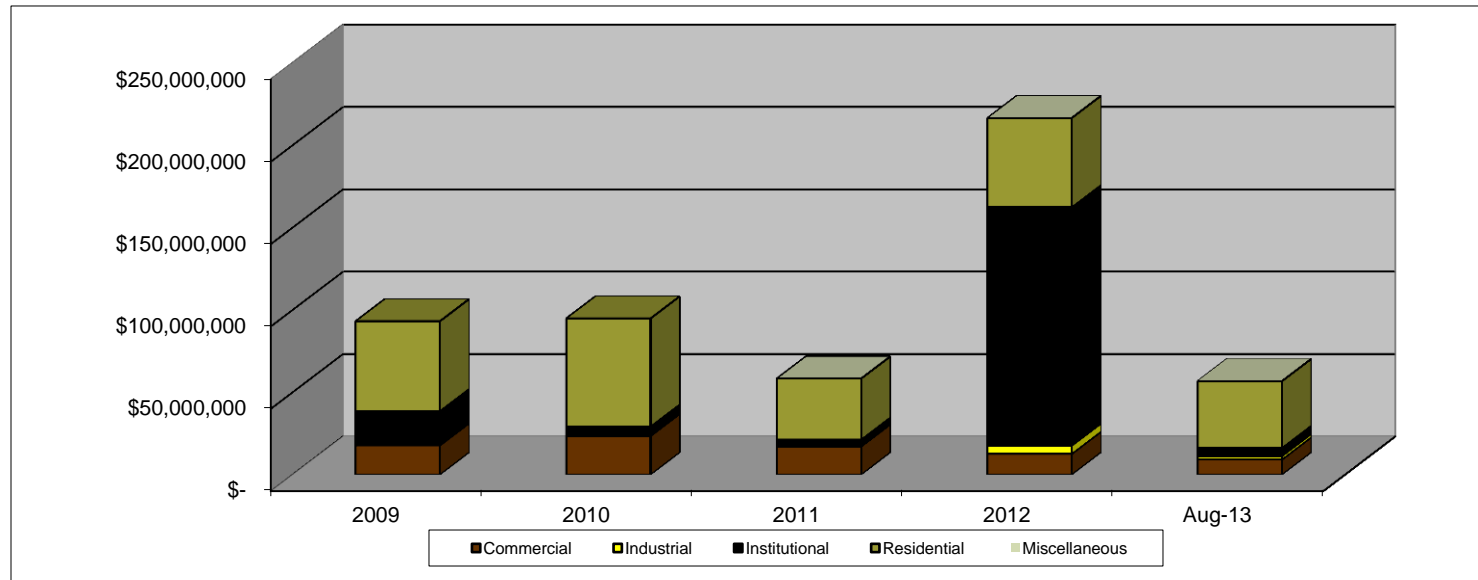
MEDICINE HAT REAL ESTATE SALES BY MONTH



Source: Medicine Hat Real Estate Board

12

MEDICINE HAT NEW BUILDING PERMITS VALUE 2009 - 2013



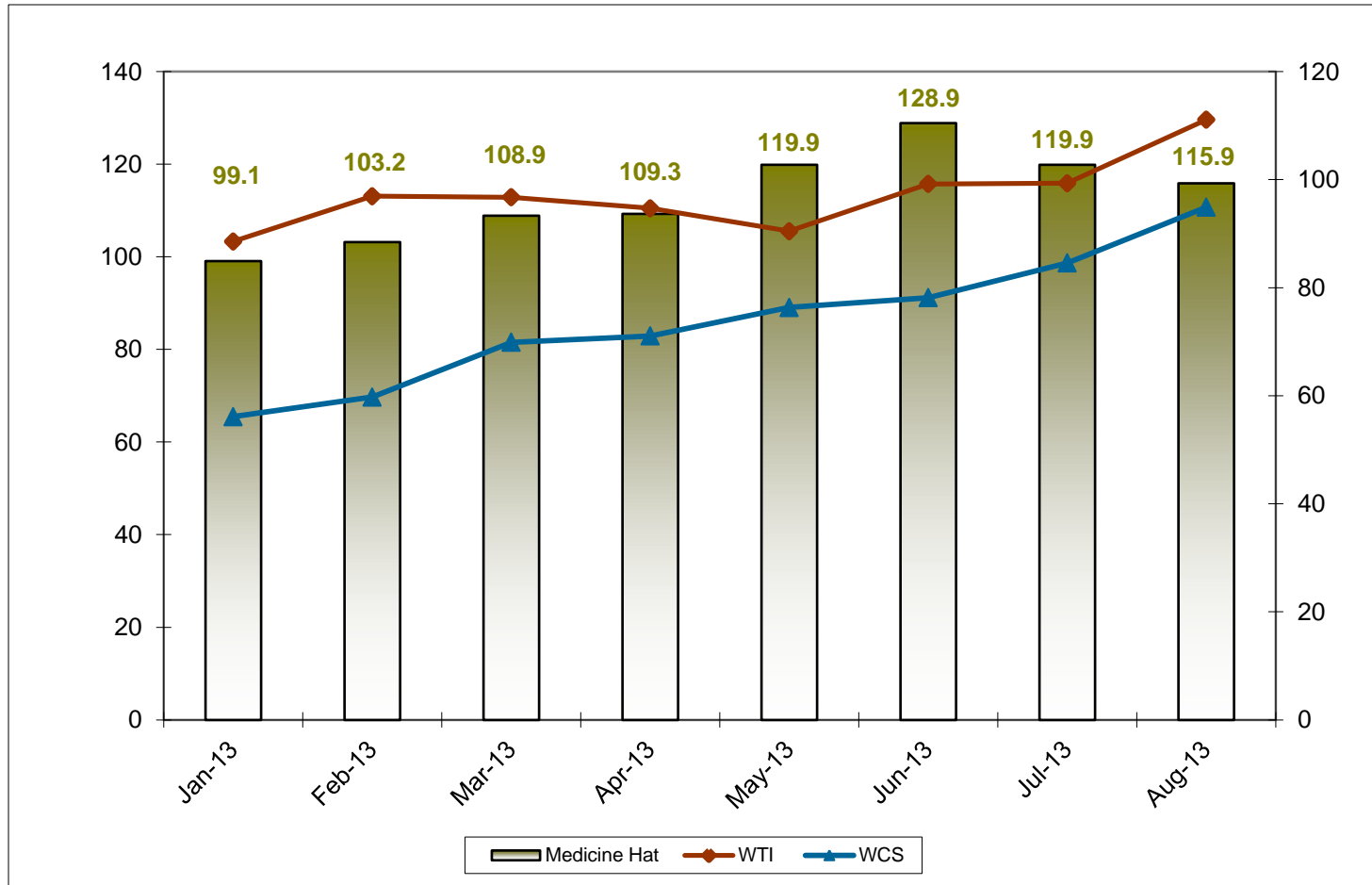
Source: City of Medicine Hat, Planning, Building and Development

BUILDING PERMITS - 2009 - 2013

	Commercial	Industrial	Institutional	Residential	Miscellaneous	Total
2009	\$ 17,794,000	\$ 860,000	\$ 19,992,000	\$ 54,530,000		\$ 93,176,000
2010	\$ 23,469,000	\$ 371,000	\$ 5,411,000	\$ 65,590,000		\$ 94,841,000
2011	\$ 17,123,000	\$ 422,000	\$ 3,770,000	\$ 37,036,000	\$ 80,000	\$ 58,431,000
2012	\$ 12,597,000	\$ 5,005,000	\$ 144,793,000	\$ 54,149,000	\$ 140,000	\$ 216,684,000
Aug-13	\$ 9,173,000	\$ 2,117,000	\$ 4,966,000	\$ 40,516,000	\$ 475,000	\$ 57,247,000

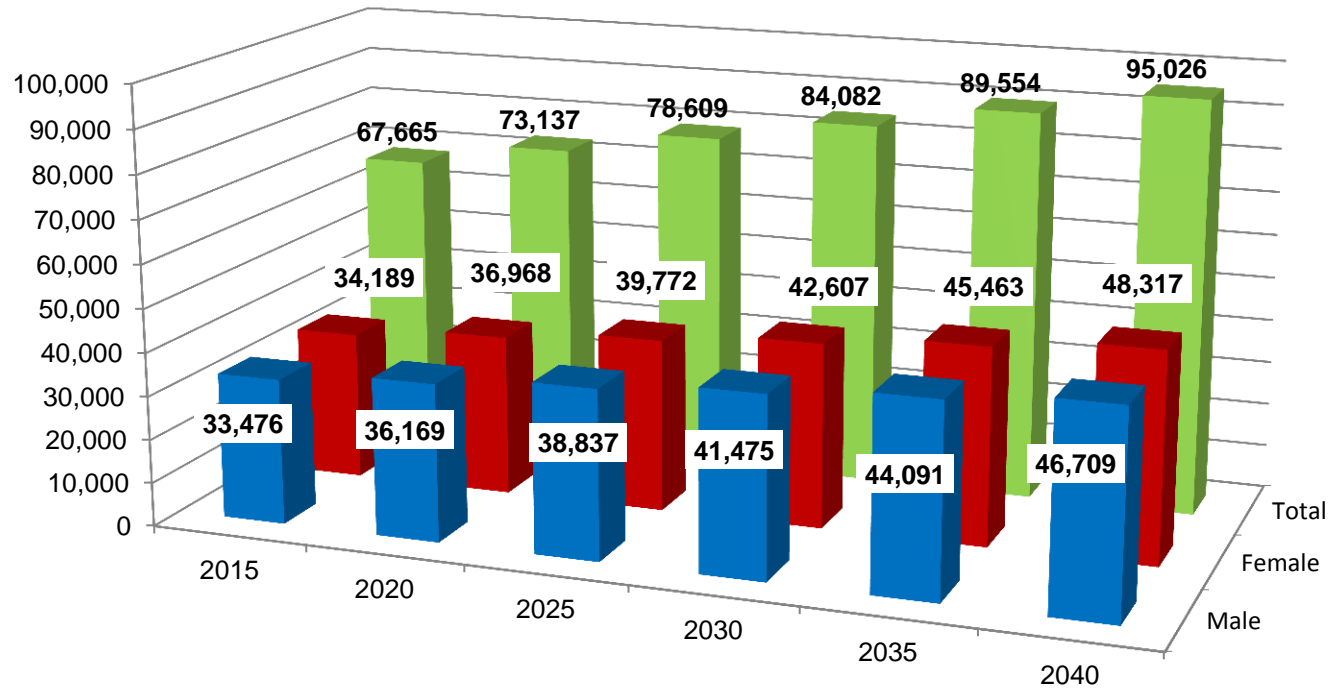
Source: City of Medicine Hat, Planning, Building and Development

MEDICINE HAT GASOLINE PRICE RELATIVE TO West Texas Intermediate (WTI) & Western Canada Select (WCS) in \$CAN



Sources: City of Medicine Hat Gas Utility | www.mjervin.com

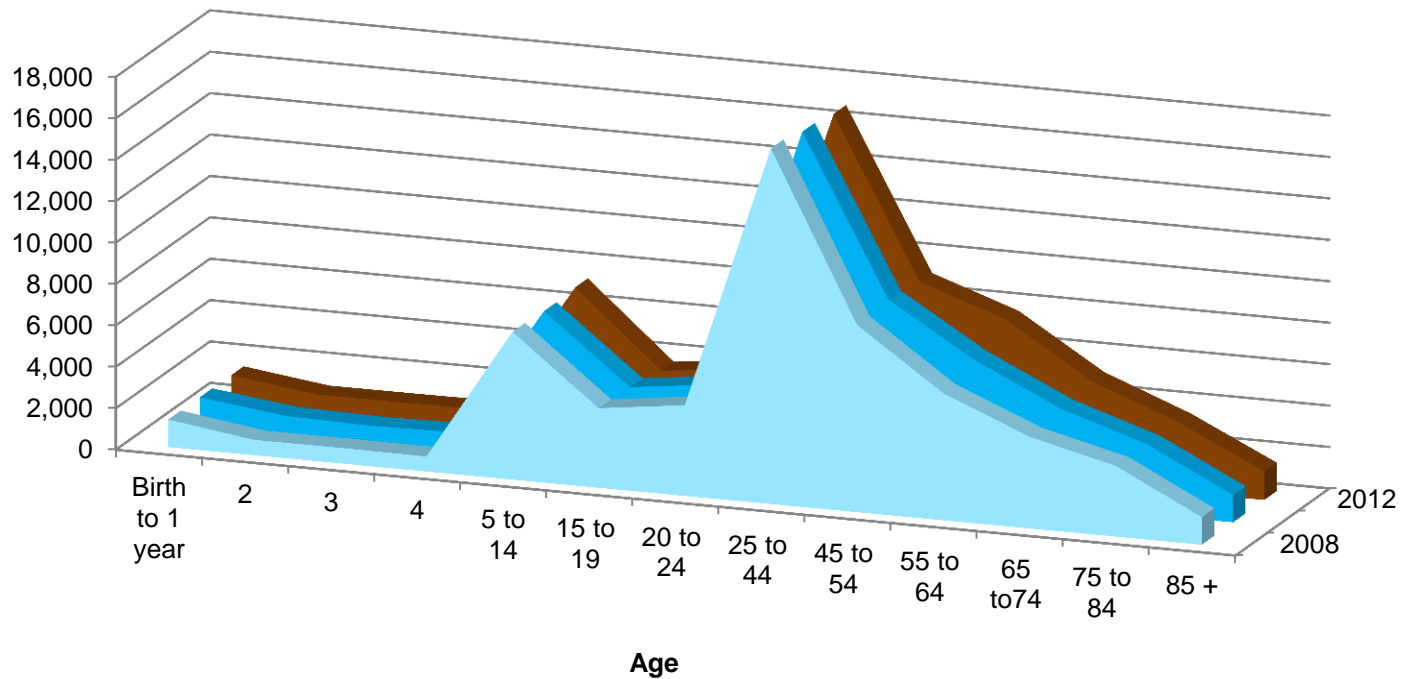
MEDICINE HAT POPULATION PROJECTIONS



Source: City of Medicine Hat Demographics And Market Trend; Population and Employment Projections
Nichols Applied Management

2012 City Census Data

2008-2012 Demographic Trends

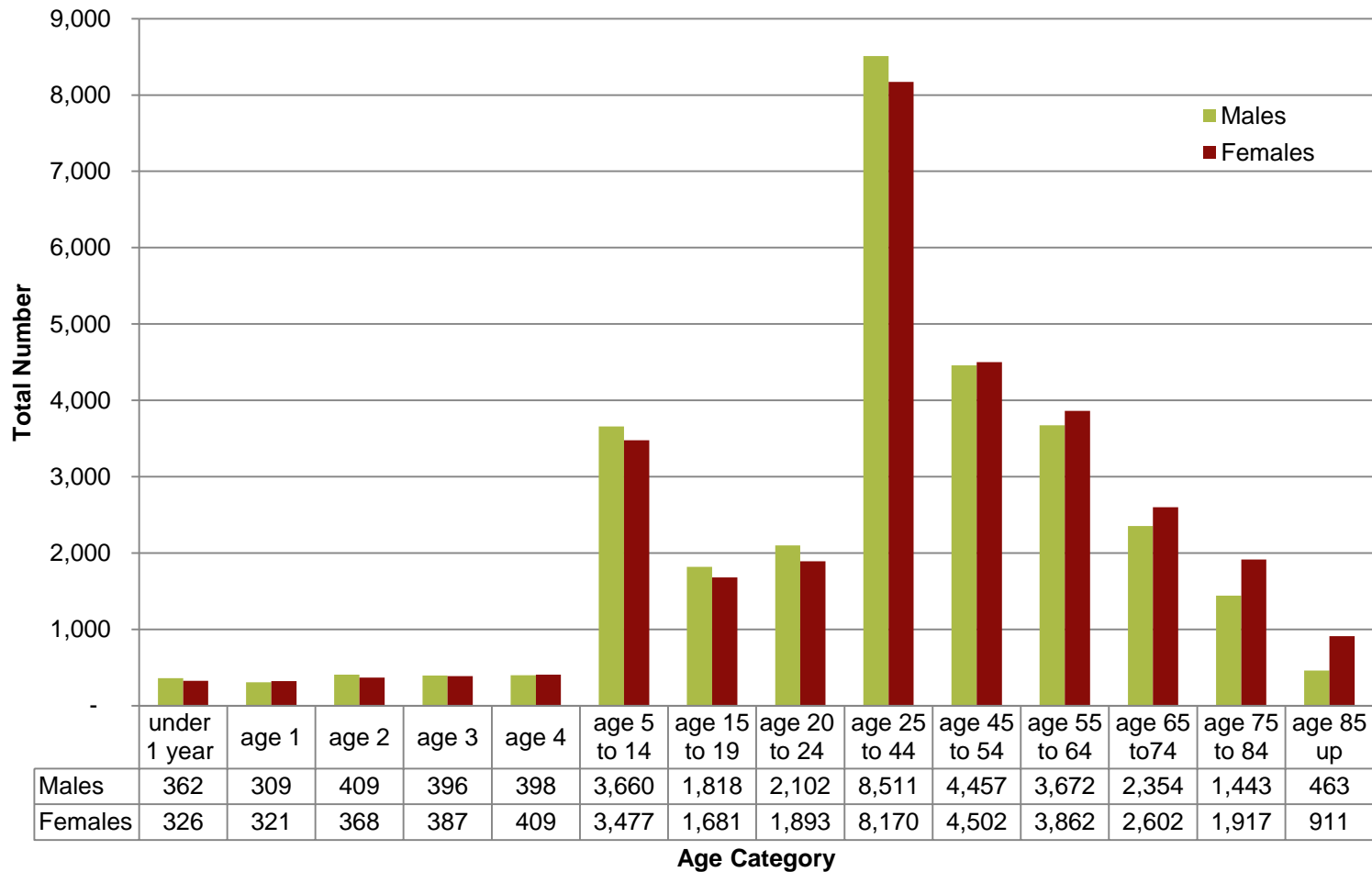


	Birth to 1 year	2	3	4	5 to 14	15 to 19	20 to 24	25 to 44	45 to 54	55 to 64	65 to 74	75 to 84	85 +
2008	1,333	743	751	726	7,137	3,843	4,381	17,165	9,037	6,132	4,430	3,418	1,330
2009	1,331	819	737	800	7,062	3,782	4,302	16,896	9,181	6,659	4,704	3,377	1,320
2012	1,318	777	783	807	7,137	3,499	3,995	16,68	8,959	7,534	4,956	3,360	1,374

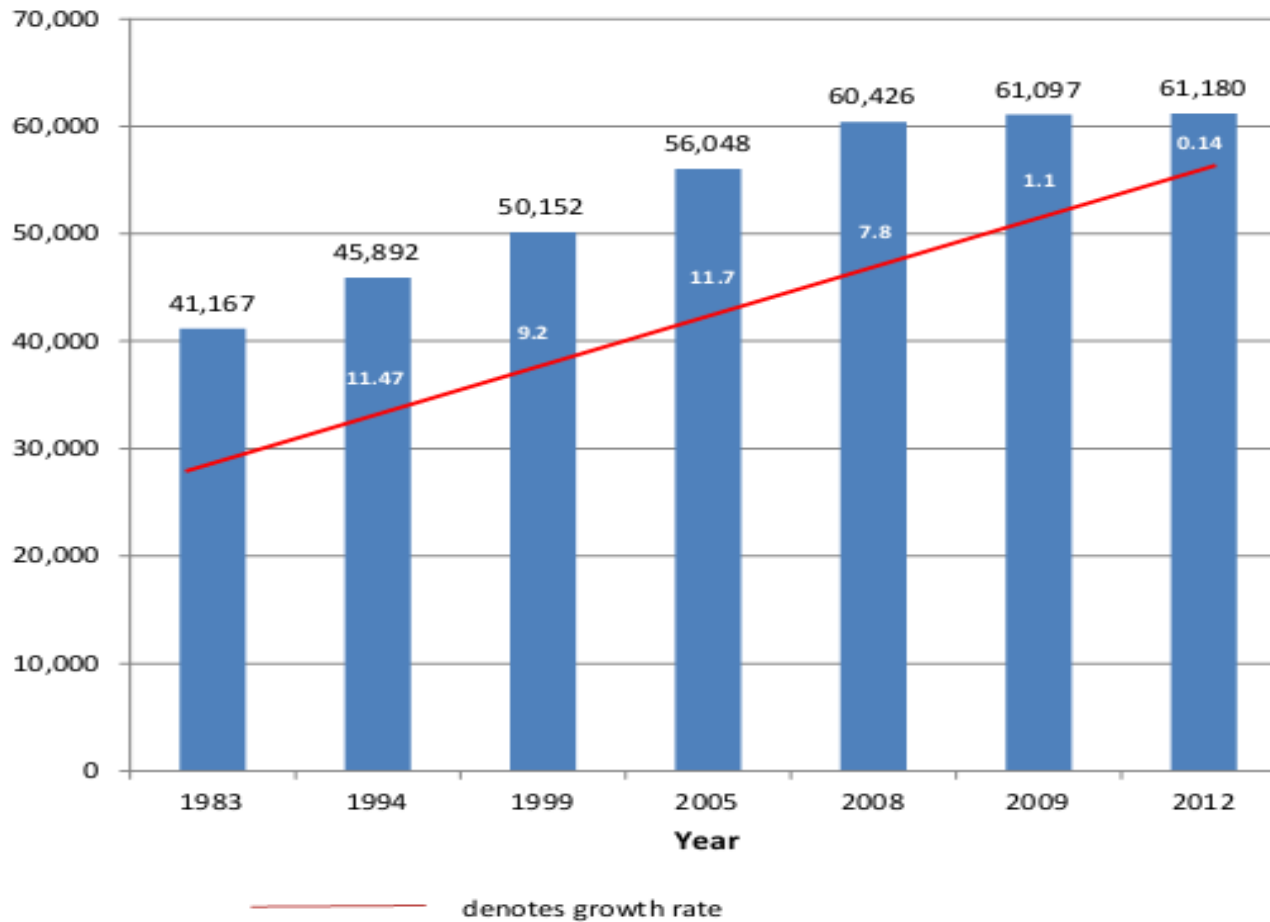
■ 2008 ■ 2009 ■ 2012

Statistical Analysis By Age and Gender

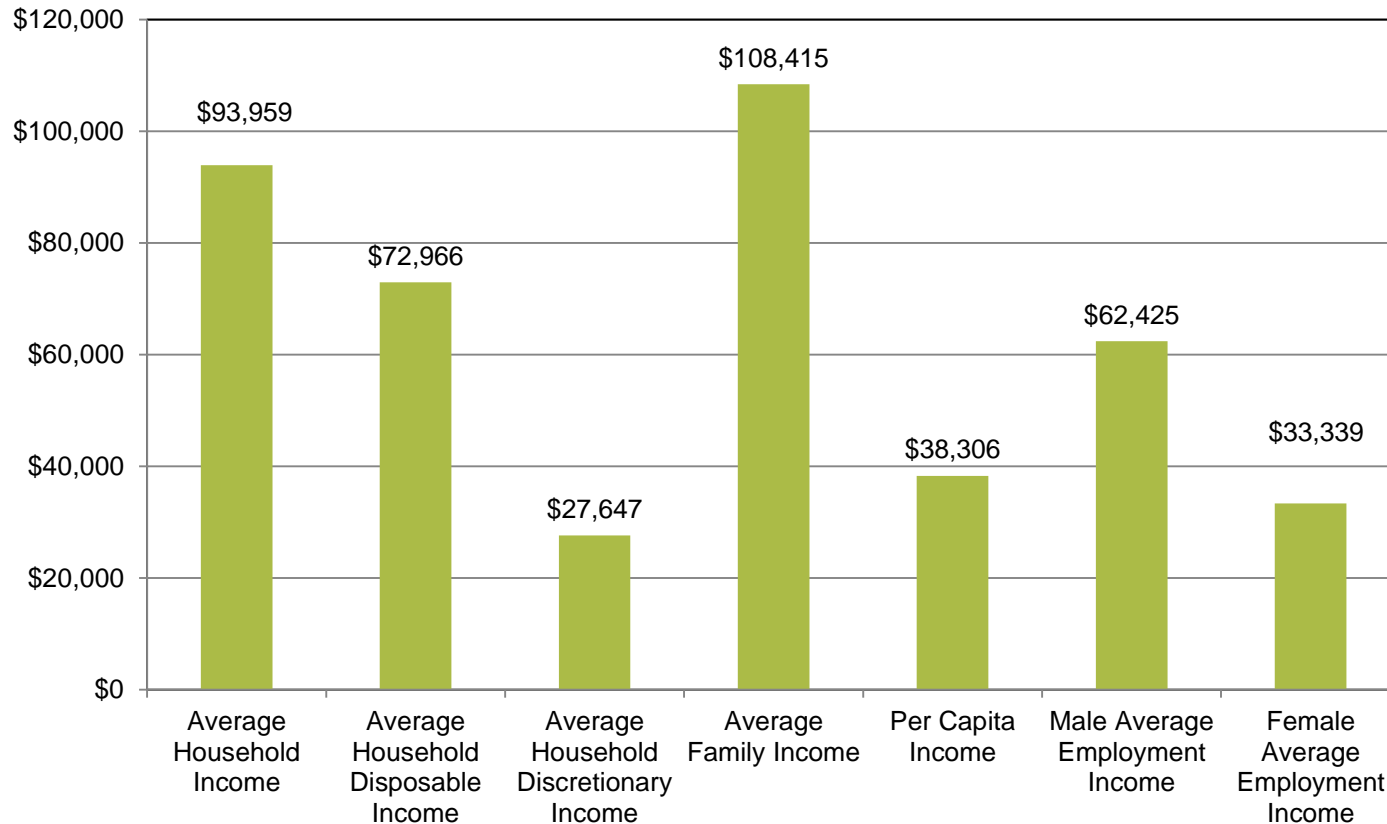
2012 City Census Data



City of Medicine Hat Population Growth



FINANCIAL POST INCOME COMPARISON PROJECTIONS FOR 2012 MEDICINE HAT



INCOME COMPARISONS

2012 Financial Post Projections

	Medicine Hat	Lethbridge	Red Deer	Grande Prairie	Alberta	Canada
Average Household Income	\$93,959	\$86,874	\$105,667	\$126,877	\$115,644	\$85,792
Average Household Disposable Income	\$72,966	\$67,449	\$81,109	\$95,845	\$87,815	\$65,213
Average Household Discretionary Income	\$27,647	\$25,450	\$32,360	\$38,466	\$34,777	\$23,429
Average Family Income	\$108,415	\$100,874	\$120,883	\$137,202	\$130,507	\$97,959
Per Capita Income	\$38,306	\$34,585	\$42,246	\$45,906	\$42,810	\$34,352
Male Average Employment Income	\$62,425	\$53,205	\$67,840	\$81,123	\$74,996	\$54,550
Female Average Employment Income	\$33,339	\$33,248	\$36,758	\$37,412	\$39,830	\$34,509

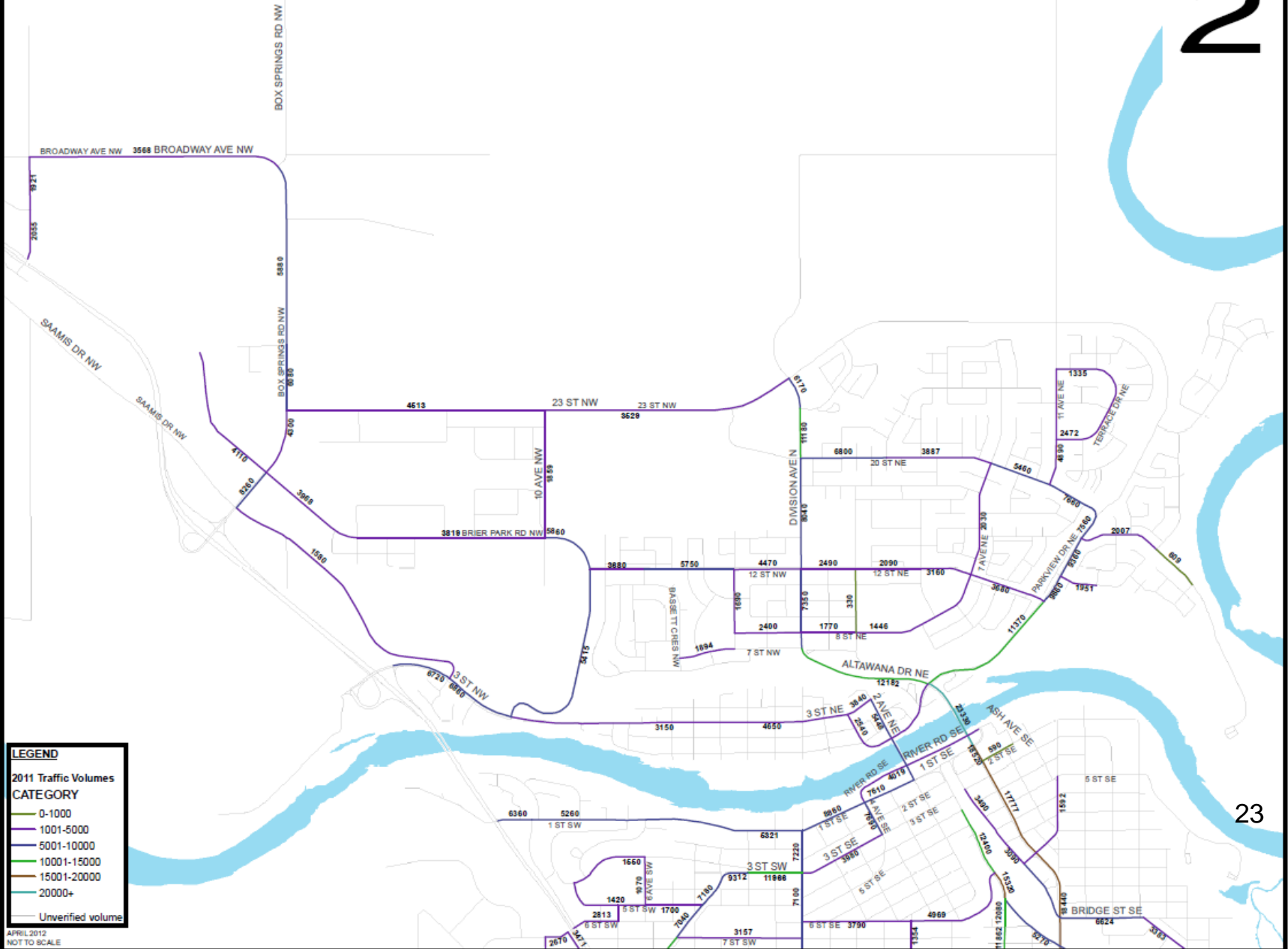
Source: FP Market, Canadian Demographics 2012

2



2011 MEDICINE HAT TRAFFIC VOLUMES - NORTH

2



23