

CE WORKSHOPS

118TH APA ANNUAL CONVENTION
AUGUST 11, 2010 SAN DIEGO, CA

NEW!

Contingency Management for Homeless Persons With Dual Diagnoses

(This workshop is jointly sponsored by the 2009 Presidential (James Bray, PhD) Task Force on Psychology's Contribution to End Homelessness and the APA Continuing Education Committee.)

CE Credits: 4

Enrollment Limit: 30

Workshop Description

This **INTERMEDIATE** workshop will train psychologists to better serve persons who are homeless with dual diagnoses using a contingency management intervention, therapeutic goals management (TGM). Attendees will become familiar with the prevalence of common comorbidities, assessment of needs and resources, strategies to negotiate and reward goals, and translating of evidence-based interventions in community settings. Attendees will be given their own TGM manual and will be briefed on funding priorities of SAMHSA.

Leaders: *Joseph E. Schumacher, PhD*, University of Alabama at Birmingham, Birmingham, AL; *Seymour Z. Gross, PhD*, Hennepin County Mental Health Center, Minneapolis, MN; *Charlene E. Le Fauve, PhD*, Department of Health and Human Services, Rockville, MD

Date: August, 11, 2010

Time: 1:00 pm-4:50 pm

Location: Hilton San Diego Bayfront Hotel (1 Park Blvd.)

Fee	Early Bird*	Regular
Member	\$130	\$160
Nonmember	\$160	\$220

ENROLL ONLINE at <http://www.apa.org/convention/ce-workshops> or call the CEP Office at 800-374-2721, ext. 5991.

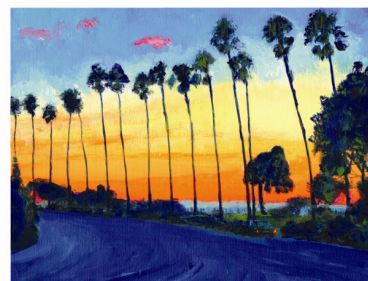
***Early Bird enrollment fee ends June 30, 2010.
Regular enrollment fee begins July 1 through August 15, 2010.**



CONTINUING
EDUCATION IN
PSYCHOLOGY

SPONSORED BY

APA OFFICE OF CONTINUING EDUCATION IN
PSYCHOLOGY & CONTINUING EDUCATION COMMITTEE



This workshop has been reviewed and approved by the APA Continuing Education Committee (CEC) to offer continuing education (CE) credit for psychologists. The APA CEC maintains responsibility for the content of the program. Full attendance at the workshop is required to receive CE credit. No partial credit is awarded; late arrival or early departure will preclude awarding of CE credits.