

Vancouver 2012 Homeless Count Results

Presentation to Council
May 29, 2012



Housing and Homelessness Strategy 2012-2021

A Home for Everyone

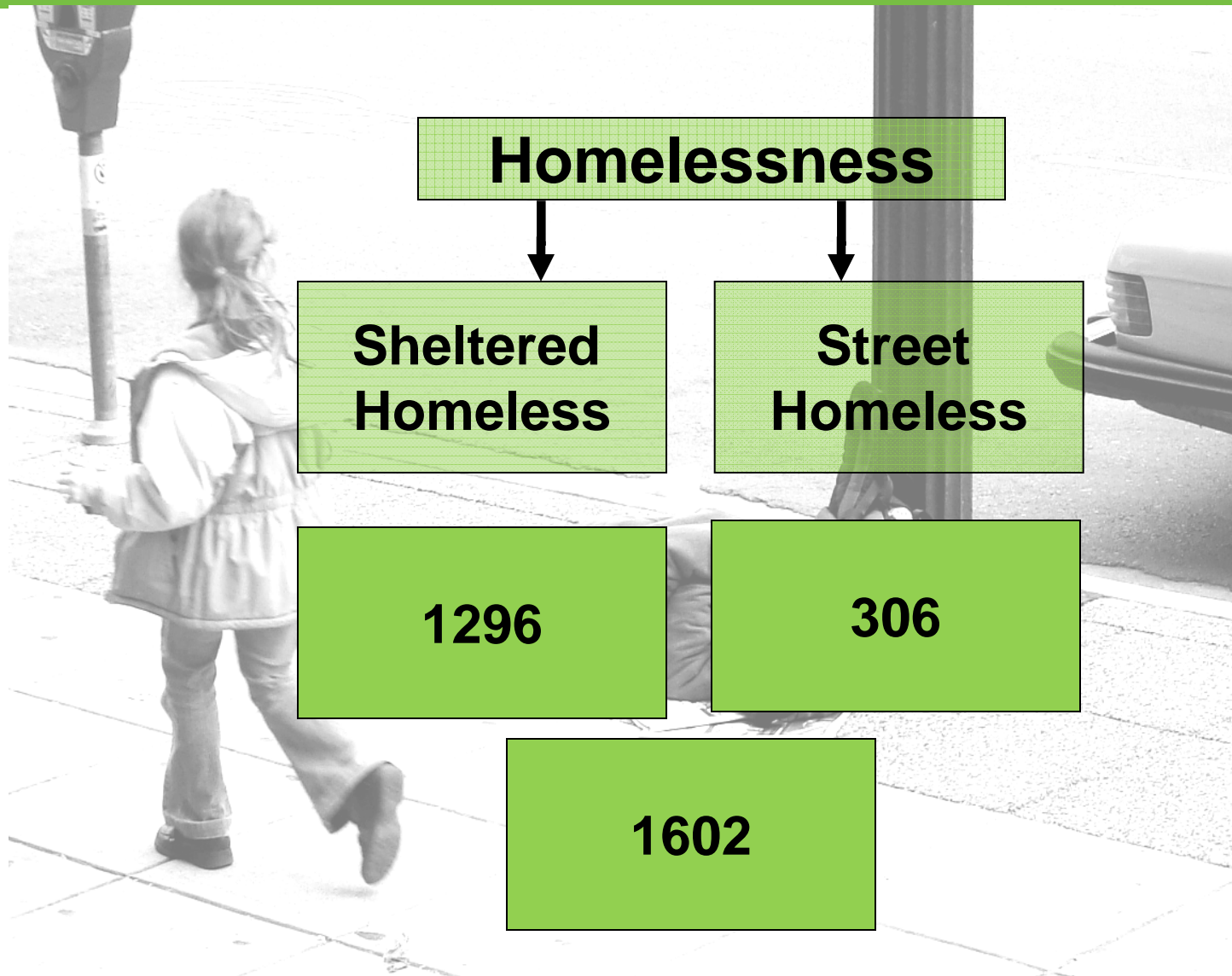
1. End Street Homelessness by 2015
2. Increase affordable housing choices for all citizens



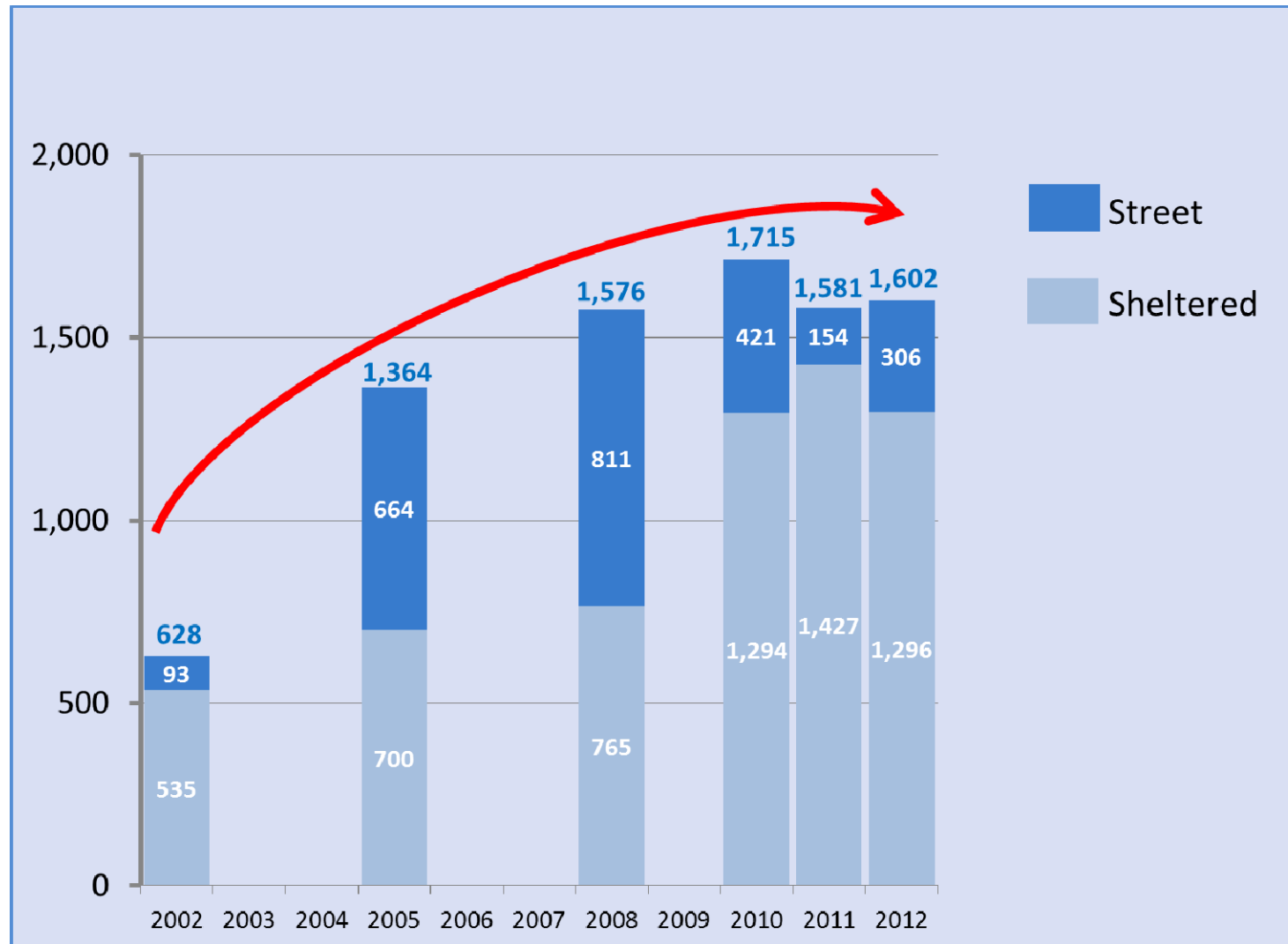
Homelessness: What it means



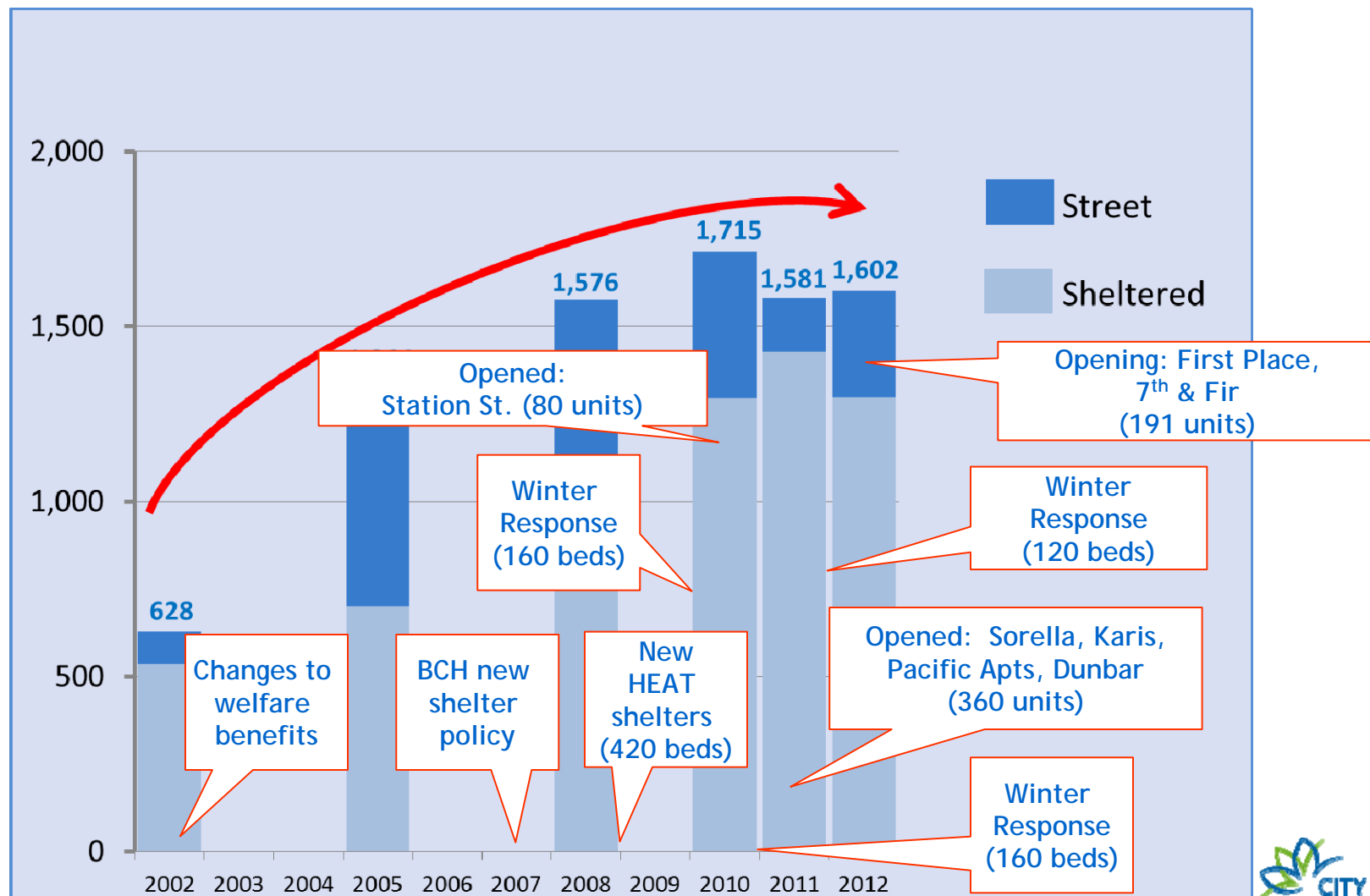
Results of 2012 Homeless Count



Homeless numbers over the past 10 years



Homelessness numbers over past 10 years



2012 Homeless demographics: Aboriginal people

Number of Aboriginal people remains disproportionately high

>2% of Vancouver's population is Aboriginal

>Routinely >30% of the homeless population is Aboriginal

Population Group	2010	2011	2012
Aboriginal people	36%	31%	32%

2012 Homeless demographics: Women & Youth

- > Number of women who are homeless has increased since 2010
- > Number of women who are homeless - just over a quarter
- > Number of youth (19-24) has fluctuated over last 3 years

Population Group	2010	2011	2012
Women	22% (377)	27% (426)	26% (416)
Youth (19-24)	13% (222)	20% (316)	12% (192)

Optimizing use of low-barrier shelters by street homeless requires:

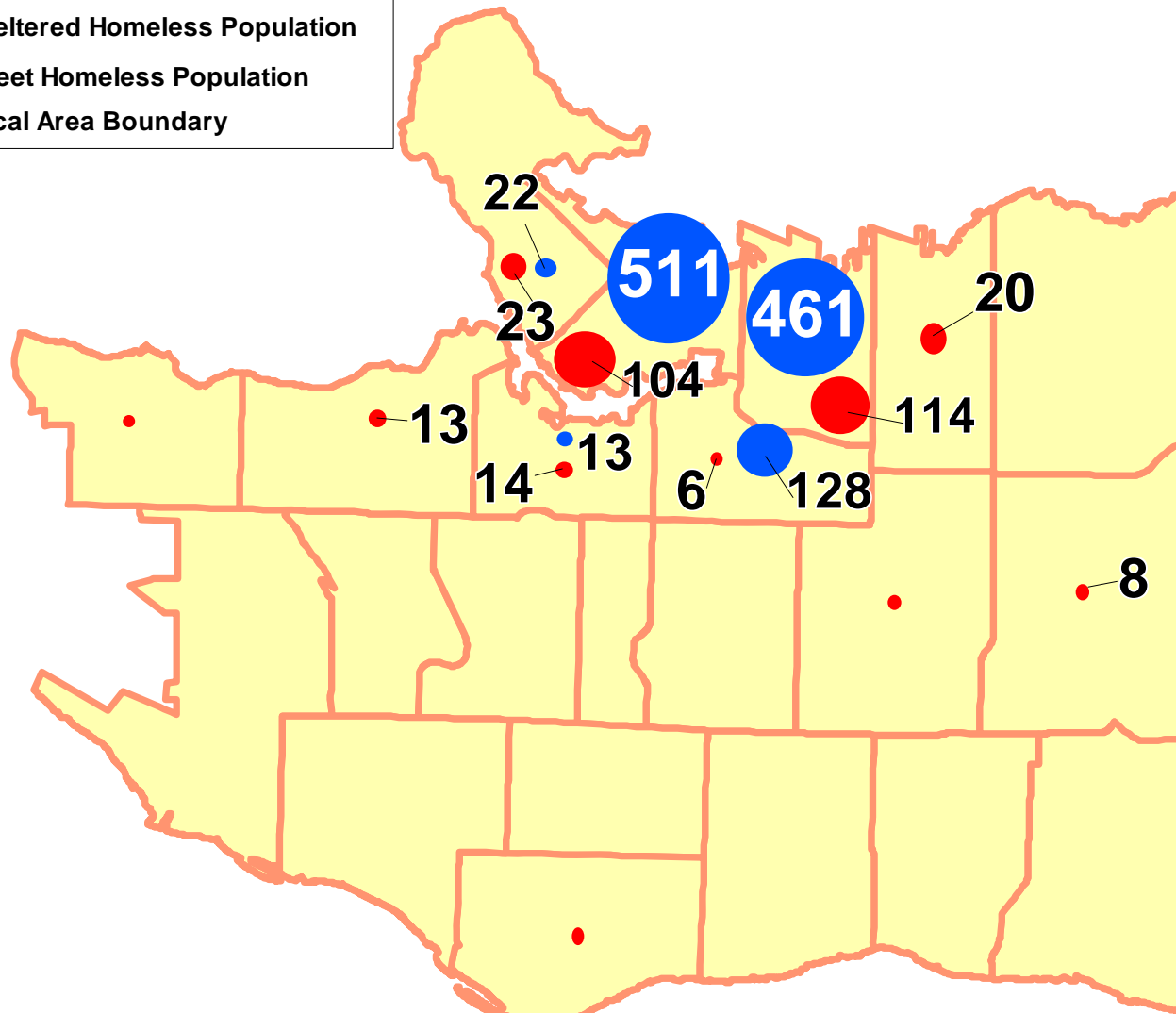
1. Low-barrier
 - Pets & carts allowed, no maximum length of stay
2. Provision of daily food, health care & social services
3. Located near to where homeless people live

Average of 11 people per night are turned away



2012: Homeless locations

- Sheltered Homeless Population
- Street Homeless Population
- ▭ Local Area Boundary



Note: data points w/ less than 5 persons are not labeled

BC Health of the Homeless Survey Report (2011)



British Columbia Health of the Homeless Survey

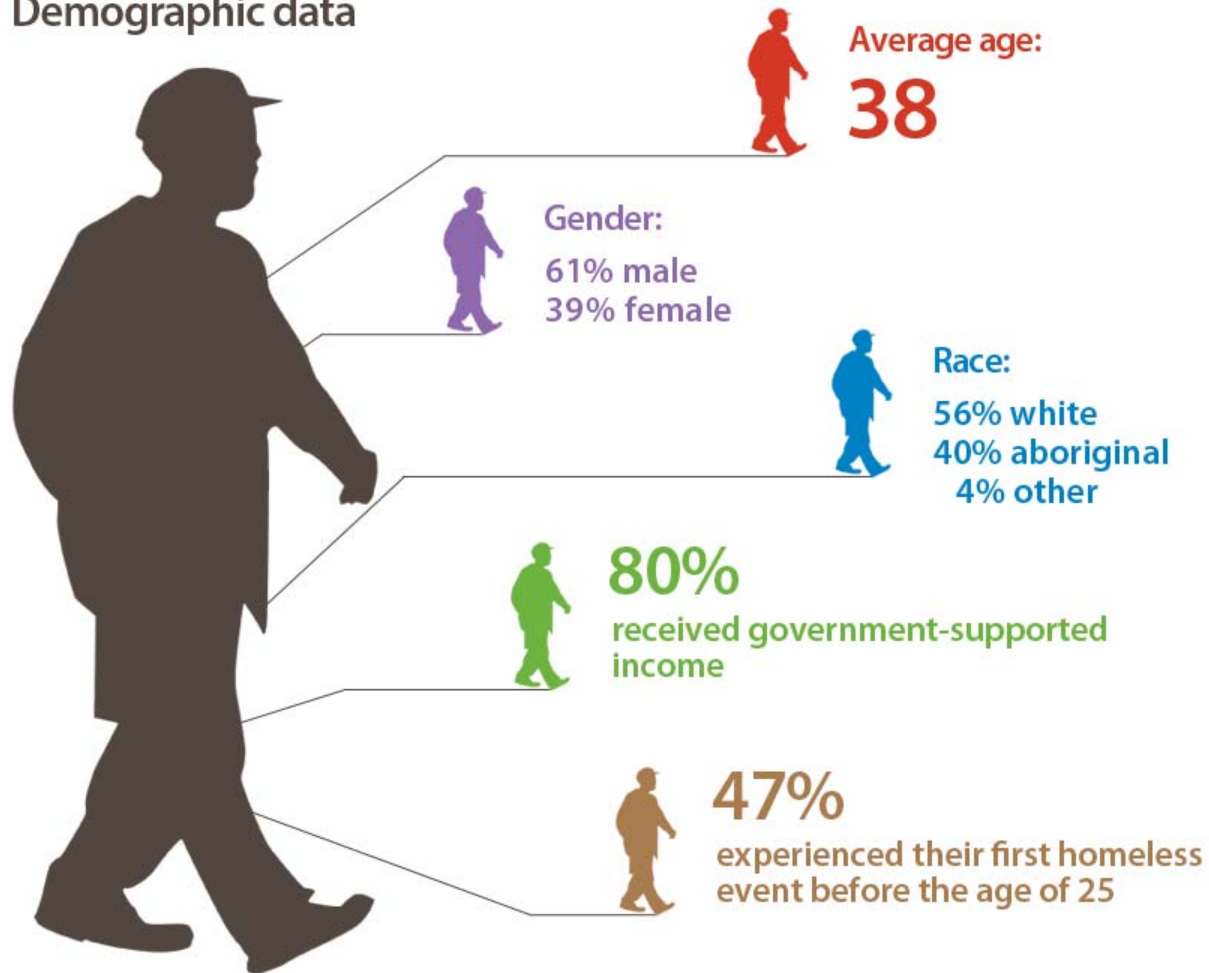
M. Krausz MD, PhD, FRCPC
UBC Providence Leadership Chair
For Addiction Research

For more info visit:

<http://www.cheos.ubc.ca/our-research/addictions-concurrent-disorders/>

BC Health of the Homeless Survey Report (2011)

Demographic data



500 homeless individuals in British Columbia; from Vancouver (n=250), Victoria (n=150), and Prince George (n=100) were surveyed about their health and mental health.

BC Health of the Homeless Survey Report (2011)

Behavioural disorders

1 person icon = 5 people

93% had a current mental disorder



57% had a current anxiety disorder



31% had a current mood disorder



Trauma

1 person icon = 5 people

86% experienced emotional, physical or sexual abuse in their childhood



60% were at risk of suicide



63% had a head injury



Substance use

1 person icon = 5 people

83% met the criteria for a substance use disorder



35% had Hepatitis B or C



1/3 reported injection drug use



BC Health of the Homeless Survey Report (2011)

Key recommendations:

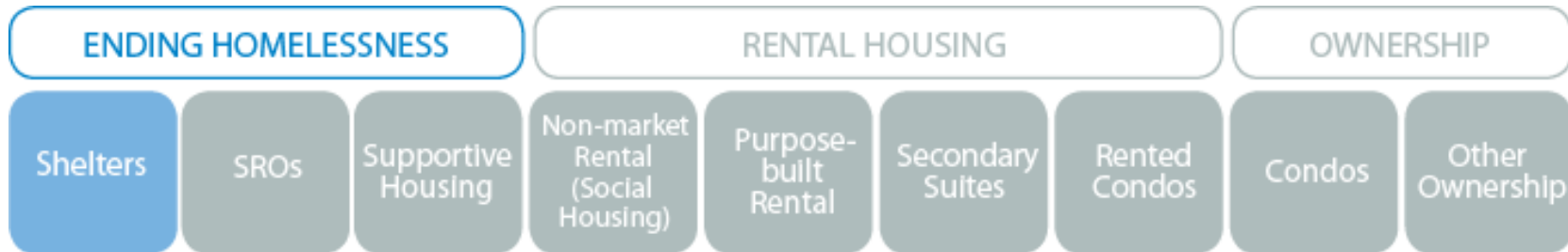
- **Treatment for mental health, addiction and trauma** should be made a priority at all levels of care
- **Low barrier treatment** and easy access to primary care, mental health and addiction services, case management, and crisis intervention
- **Early support for childhood trauma** - family intervention and prevention for trauma and re-traumatization
- Support for drug users in vulnerable populations - **immediate access to detoxification and substitution treatment services** in addition to counseling and case management
- Care for severe and persistent mental illnesses - supported community housing, intensive case management and crisis intervention

Mental health must be considered when addressing homelessness in British Columbia in order to make a significant impact on this devastating public health issue.

Solutions to homelessness require strong partners



Success & challenges: Low-barrier shelters



HEAT & Winter Response	2010/11	2011/12
Howe	40	40
Marble Arch	-	40
Joe's	-	40
Umbrella	-	26
Cardero	40	-
Fraser/Broadway	40	-
Kits	40	-
Aboriginal	100	100
First United	210	150
New Fountain	40	40
TOTAL	510	436

74 fewer low barrier shelter spaces in 2012

Outreach teams successful in housing majority of people leaving shelters

Success & challenges: Interim housing



- Dunsmuir 100 units
 - Mental Health Commission - At Home/Chez Soi
 - Bosman 100 units
 - Scattered Sites 200 units
- = 400 units scheduled to close in 2013**

For more information on At Home/Chez Soi visit <http://athome.nfb.ca/>

[At Home/Chez Soi Documentary](#) (3min)

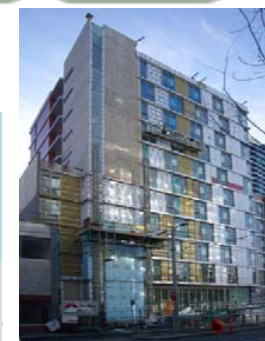


Success & challenges 2010 - May 2012: 14 City sites of supportive housing



439 supportive housing units in 5 buildings since 2010

Site	Operator	Units	Housed				Homeless
			SRO	Other	At-Risk	Homeless	
Station Street	PHS	80	41	3	0	36	
Pacific Apartments	Coast	96	68	1	6	20	
Sorella	Atira	108	26	0	14	68	
Karis	More Than A Roof	104	32	25	27	20	
Dunbar	Coast	51	1	20	8	22	
TOTAL		439	168	49	55	166	
% of Total Units			38%	11%	13%	38%	



Success & challenges - 2012 Homeless Count: Importance of tracking progress

2009 Streethome Ten Year Plan for Vancouver:
Estimate: ~2000 supportive housing units over 10 years required
to address chronic homelessness in Vancouver

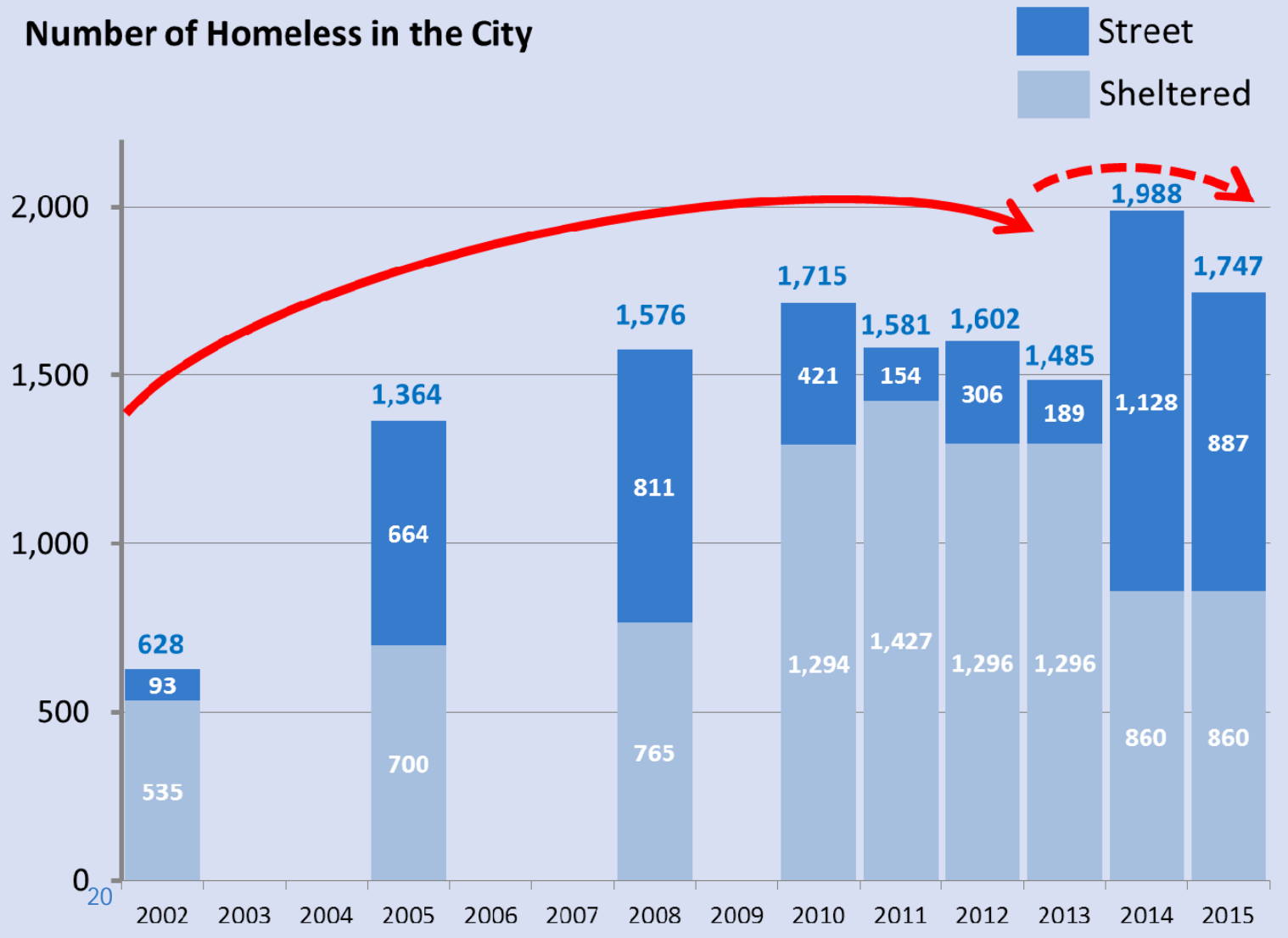
2008 Homeless Count: 50% chronically homeless
Chronically homeless *"...face the greatest barriers to housing and we
consider them a priority"*

Streethome: Assist with 600 supportive housing units (~200/year)
2010-2012

- 60% (360) units would be prioritized for chronically homeless
- May 2012: 38% (166) of units in new supportive housing units
have been tenanted with homeless people

Estimating the gap: Status quo

Number of Homeless in the City



Assumptions:

- 1%/yr growth in homelessness
- 38% of new supportive housing units go to homeless
- Assumes 90% of those filling SRO vacancies (backfills) are homeless
- 2013: Dunsmuir & At Home/ Chez Soi close - no replacement
- 2013: HEAT & Winter Response Shelters close - no replacement

Success & challenges: Ensuring success Provincial / City / STH Homelessness Initiative

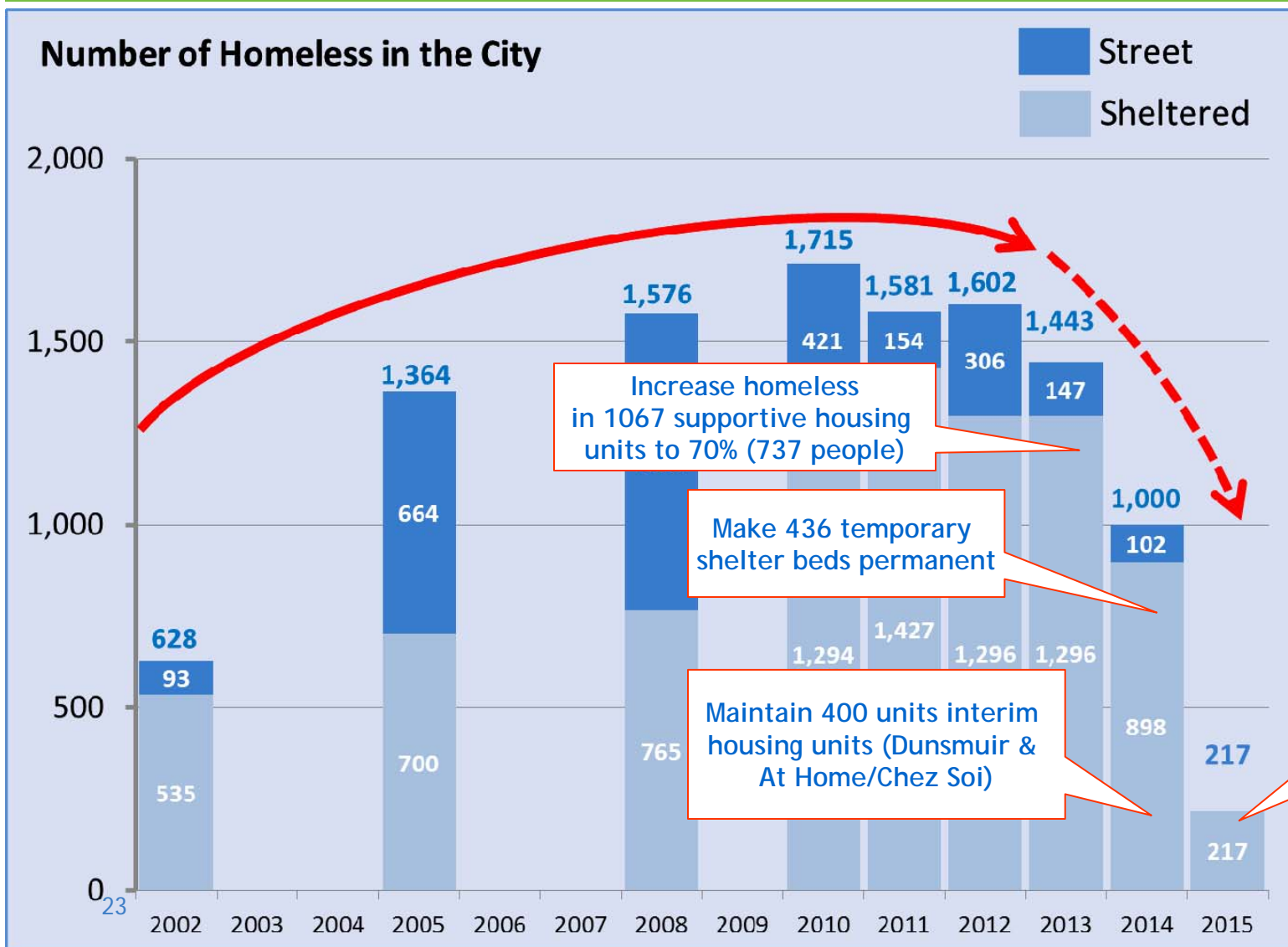
- Total units over 14 sites - 1506
- 5 of the 14 sites already opened & tenanted (439 units)
 - 38% of tenants were homeless (street or sheltered) at tenanting
- By end 2014: remaining 9 buildings to open (1067 units)
- To meet STH goal of housing 60% chronically homeless:
 - 737 homeless individuals to move into new 14 city site units
- 70% of tenants going forward will need to come from shelters or street
 - Will require appropriate resources for support
 - Will require strong leadership amongst Province / City / STH / non-profit operators

Ongoing challenges

- Increase in street homeless since 2011
- Insufficient & decreasing low-barrier shelter beds
- Less than expected numbers of homeless people moving into new 14 City-sites (Oct 2011 Council Report)
- Lack of clarity on future of interim housing (Dunsmuir & At Home / Chez Soi)
- Streetohome identify new homeless coming from health system, corrections & foster care
- Need for more affordable rental in City
- 27% of SROs renting at \$375

Gap will increase if challenges not addressed

Recommendations for closing the gap



Housing & Homelessness Strategy: 3 yr Action Plan



STRATEGIC
DIRECTION 1

Increase the supply of affordable housing



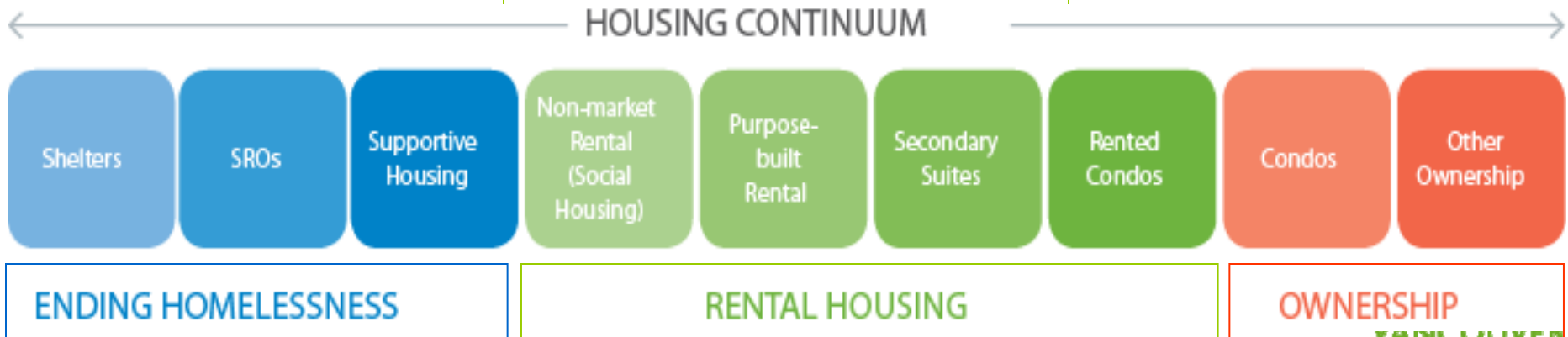
STRATEGIC
DIRECTION 2

Encourage a housing mix across all neighbourhoods that enhances quality of life



STRATEGIC
DIRECTION 3

Provide strong leadership and support partners to enhance housing stability



Next steps: 3 yr Action Plan

Strategic direction 1: Increase the supply of Affordable Housing

1. Assist in creation of 450 new supportive housing units
 - Identify additional City-owned sites (250 units)
 - Assist community partners with projects underway (200 units)
2. Work with BC Housing to sustain 400 units of interim housing
 - Dunsmuir, At Home/Chez Soi (Bosman & scattered sites)
3. Market rental opportunity
 - Work with non-profits, private landlords, VCH & BC Housing to increase scattered supportive housing units

Next steps: 3 yr Action Plan

Strategic direction 2:

Encourage a housing mix across all neighbourhoods that enhance quality of life

1. Final Homeless Count report - June 2012

2. Support BC Housing Shelter Review

- Sharing of data
- Maintain HEAT and Winter Response shelters pending permanent supportive housing
- Make 436 shelter beds permanent
- Support partners who focus on Aboriginal & women who are homeless

Next steps: 3 yr Action Plan

Strategic direction 3:

Provide strong leadership and support partners to enhance housing stability

1. Increase the number of homeless moving into the 14 City-sites from 38% to 60% overall

- Carnegie Outreach Team filling SRO backfill vacancies

2. Support Streetohome:

- Prevent of homelessness (health, justice & foster care systems)
- June 22, 2012: Healthy City Summit

www.vancouver.ca/healthycity

Next steps: 3 yr Action Plan

Strategic direction 3:

Provide strong leadership and support partners to enhance housing stability

3. Work with BC Housing, Vancouver Coastal Health & other partners to deliver Dr.Krausz' recommendations:

- Improve access at all levels of care for mental health, addiction & trauma
- Deliver effective family intervention & prevent childhood trauma
- Improve access to detox & substitution treatment, counseling and case management
- Ensure low barrier treatment is available for mental health, addiction & trauma